



Collecting & Utilizing Reliable, Local Community-Based Health Information

**An Overview of PHMC's
Community Health Data Base**

2011

About PHMC

Public Health Management Corporation (formerly Philadelphia Health Management Corporation) is a non-profit public health institute offering a diverse mix of programs and services. For more: www.phmc.org

Addictions Services

Health Promotion, Injury Prevention

Criminal Justice Treatment Initiatives

Early Intervention Service for Infants and Toddlers

HIV/AIDS Prevention

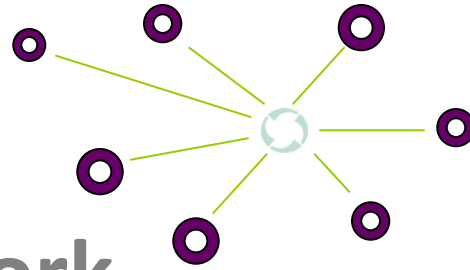
Nurse Managed Care

Services to Homeless

Research and Evaluation (R&E)



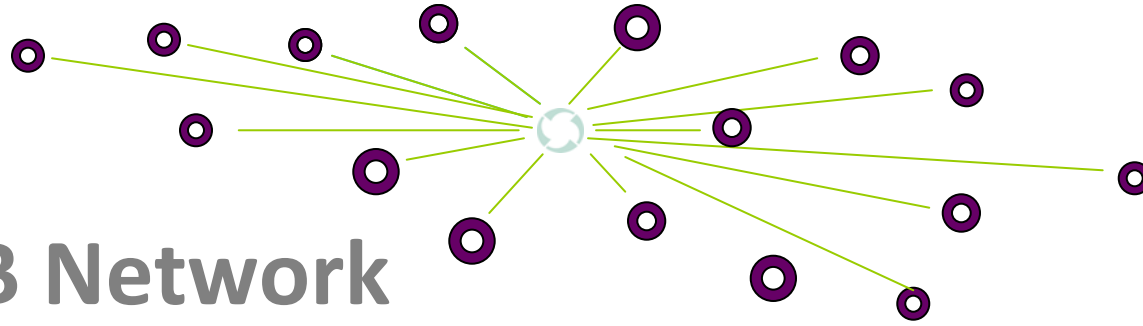
Introduction:
What is the Community Health Data Base?



The CHDB Network

Who participates in the Community Health Data Base?

Foundations – The Pew Charitable Trusts; William Penn Foundation; United Way of Southeastern Pennsylvania; The United Way of North Penn; CIGNA Foundation; Green Tree Community Health Foundation; Philadelphia Foundation; The North Penn Community Health Foundation; and the Thomas Scattergood Foundation.

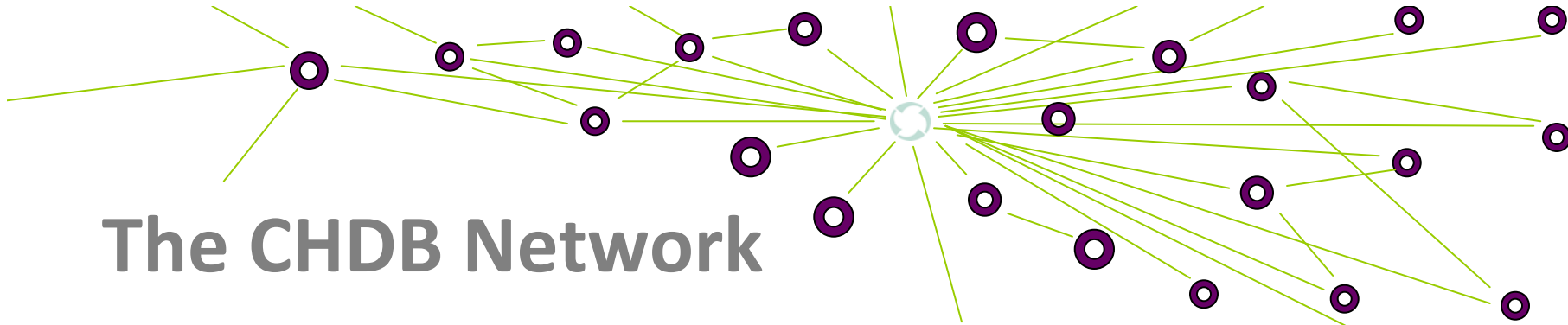


The CHDB Network

Who participates in the Community Health Data Base?

Foundations – The Pew Charitable Trusts; William Penn Foundation; United Way of Southeastern Pennsylvania; The United Way of North Penn; CIGNA Foundation; Green Tree Community Health Foundation; Philadelphia Foundation; The North Penn Community Health Foundation; and the Thomas Scattergood Foundation.

Members – Hospitals, health systems, managed care organizations, universities, and government agencies.



The CHDB Network

Who participates in the Community Health Data Base?

Foundations – The Pew Charitable Trusts; William Penn Foundation; United Way of Southeastern Pennsylvania; CIGNA Foundation; Green Tree Community Health Foundation; Philadelphia Foundation; and the Thomas Scattergood Foundation.

Members – Hospitals, health systems, managed care organizations, colleges and universities, and government agencies.

Affiliates – more than 350 community-based organizations from across the five-county region.

The CHDB: How Is It Used?



Strategic Local Research

A wide range of institutions and agencies use the Community Health Data Base for...

Needs assessments

Strategic growth decisions, facility planning

Disease management initiatives

Marketing & outreach

Grantwriting, development, & institutional advancement

Community health programming

Teaching & academic research

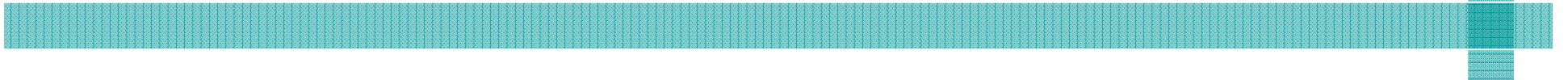
Advocacy & public relations

Data Sources:
What Data Can I Access Through the CHDB?

Data Sources

- I. Southeastern Pennsylvania Household Health Survey:** This is the CHDB's proprietary data set.
- II. U.S. Census:** The CHDB provides selected data from the Census in useful aggregates and incorporates third-party data to provide interim projections
- III. Vital Statistics:** Data from the State of PA formatted to provide epidemiological information on births and deaths.

Methodology in Brief:
The Household Health Survey



Southeastern Pennsylvania Household Health Survey

- Survey began in 1983
- Since 1994, fielded every other year
- Interviews conducted by telephone using **random digit dial**
- Interviews conducted in **10,000 households every two years.**
 - About 3,000 additional interviews about a selected conducted with a child proxy
 - Total sample size: about **13,000 adults and children**



Southeastern Pennsylvania Household Health Survey

- Geographic Reach:
 - Bucks
 - Chester
 - Delaware
 - Montgomery, and
 - Philadelphia Counties



A trusted and comprehensive source of community health data for the region

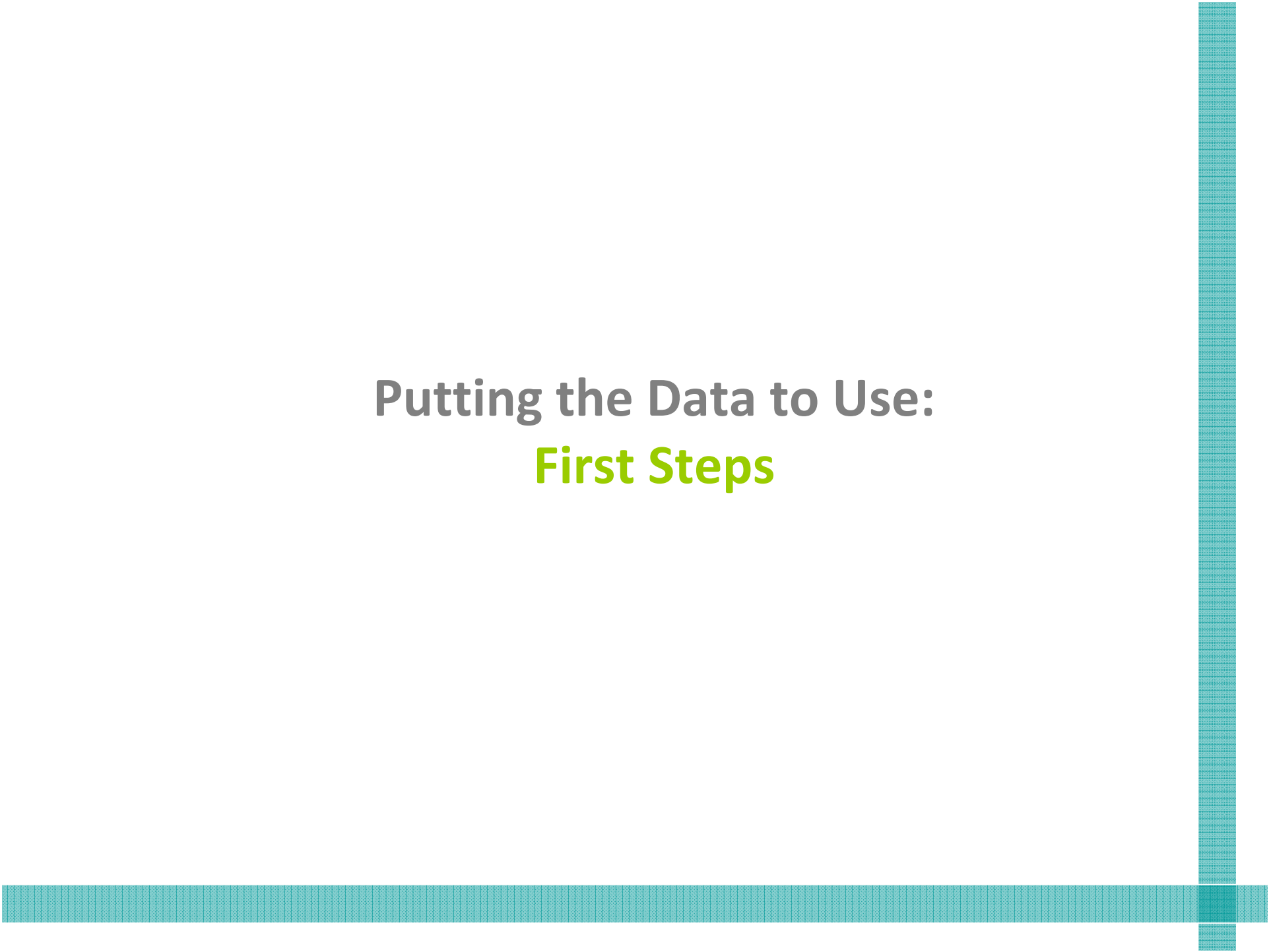
- Adult & child respondents selected using last birthday method.
- Oversample of persons 60+ and 75+
- Interviews in English & Spanish. Foreign-language proxy, if needed.

Southeastern Pennsylvania Household Health Survey

- Dramatic rise in wireless-only households in recent years
- To address: CHDB introduced a cell phone sampling frame in 2008
 - Philadelphia-only pilot study
 - 300 cell-based interviews
- New challenges:
 - Higher cost due to cell phone number portability, hand-dialing, compensation for participants, and high proportion of cell users under 18 years
- Cell phone interviews expansion in 2010!
 - 1,000 interviews across 5-county area



Putting the Data to Use:
First Steps



Defining Your Community

GEOGRAPHIC

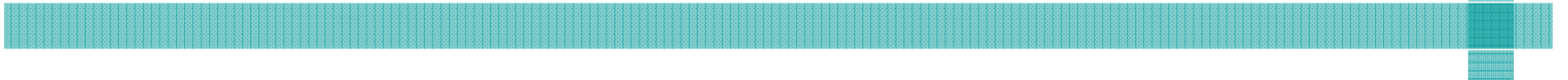
- Neighborhoods
- Census tracts
- ZIP codes
- Planning Analysis Sections
- Health districts
- Suburban townships
- County, region

DEMOGRAPHIC

- Any age/age group
- Women
- Children
- Older adults
- Ethnic and racial groups
- Below poverty level
- Uninsured
- Many other demos

More than 10,000 randomly selected households.
3,000 additional interviews regarding children living in those households—
for a total of **13,000+ interviews.**

**Putting the Data to Use:
Household Health Survey
Topic Areas and Examples**



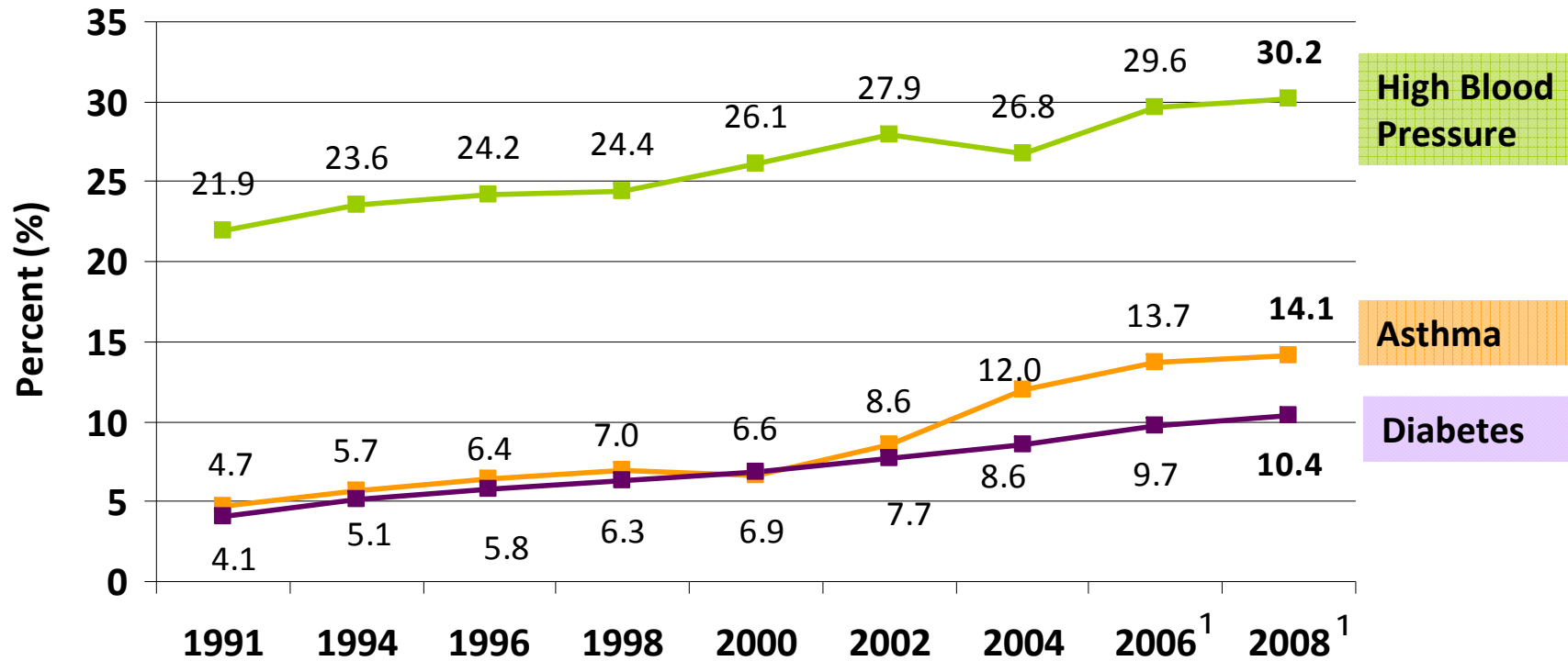
Topic Areas: **Health Status**

- ✓ Self-reported health status
- ✓ Chronic health conditions: Asthma, Diabetes, high blood pressure & cholesterol
- ✓ Use of prescription medications for asthma
- ✓ Hypertension and high cholesterol control
- ✓ Obesity (BMI calculation)



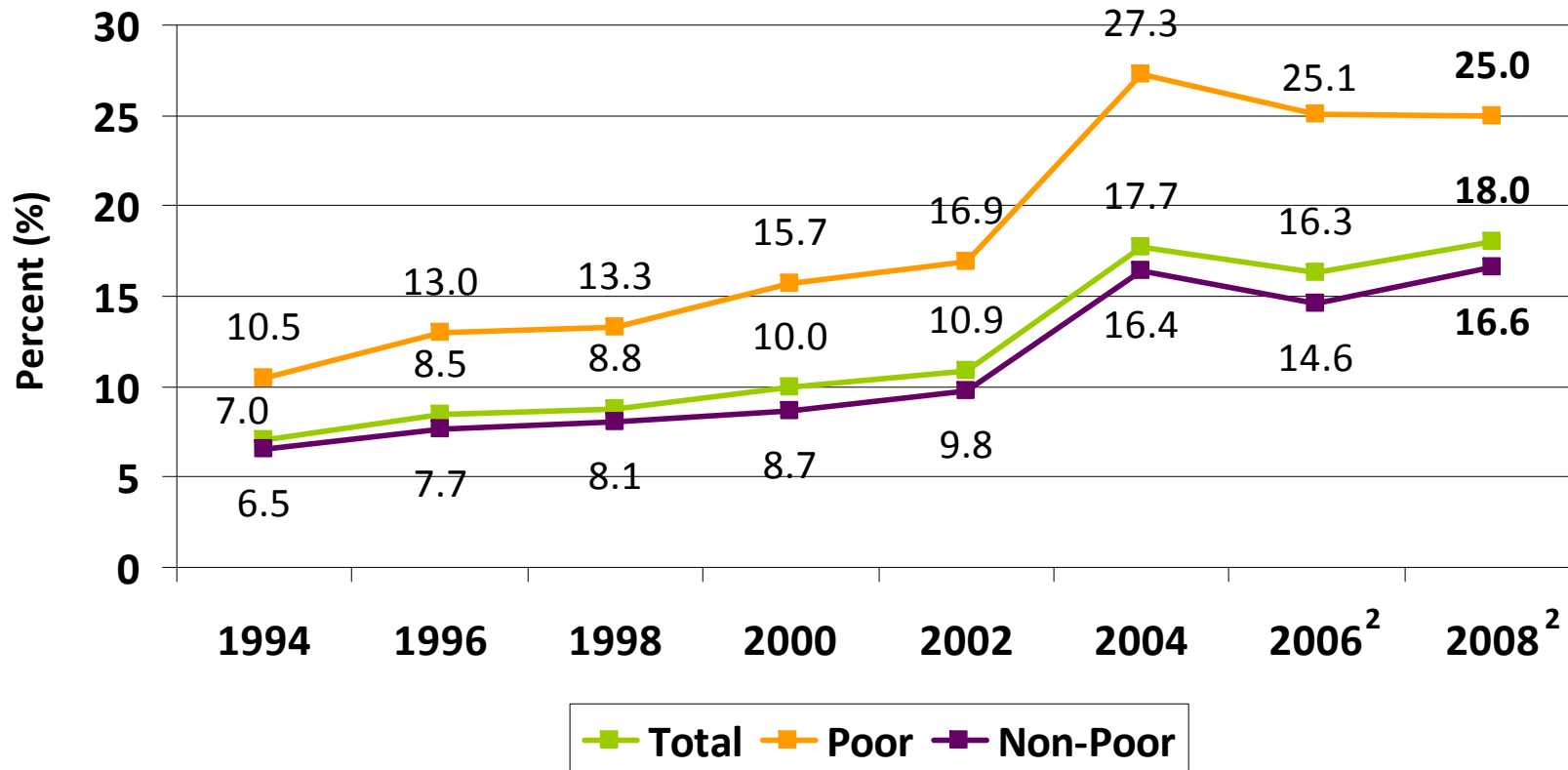
Documenting and monitoring health status, chronic conditions, and health disparities has been a keystone of PHMC's Southeastern Pennsylvania Household Health Survey for more than 25 years.

Figure 1. Chronic Health Conditions among Adults (18+), Southeastern Pennsylvania, 1991-2008.



¹In the 2004 and later surveys, the wording of the question about asthma and diabetes was changed slightly: respondents were asked if they EVER had asthma or diabetes. In past survey years, respondents were asked if they currently have asthma and diabetes.

Figure 2. Asthma among Children (0-17) by Poverty Status¹, Southeastern Pennsylvania, 1994-2008.



¹ Poverty level is defined as below or above 100% of the Federal Poverty Level. Poverty level is calculated based on family size and household income. For example, a family of four with an annual income of \$21,200 in 2008 was considered living in poverty.

² In the 2004 and later surveys, the wording of the question about asthma was changed slightly: respondents were asked if they ever had asthma. In past survey years, respondents were asked if they currently have asthma.

Topic Areas:

Disease Prevention & Access to Care

DISEASE PREVENTION

Routine Screening and Exams

- ✓ Dental visit
- ✓ Eye examination
- ✓ Blood pressure reading
- ✓ Cholesterol check
- ✓ HIV Testing
- ✓ Pap smear
- ✓ Clinical breast exam
- ✓ Mammogram (40+)
- ✓ Prostate (45+)
- ✓ Flu, pneumonia vaccination (60+)

Topic Areas:

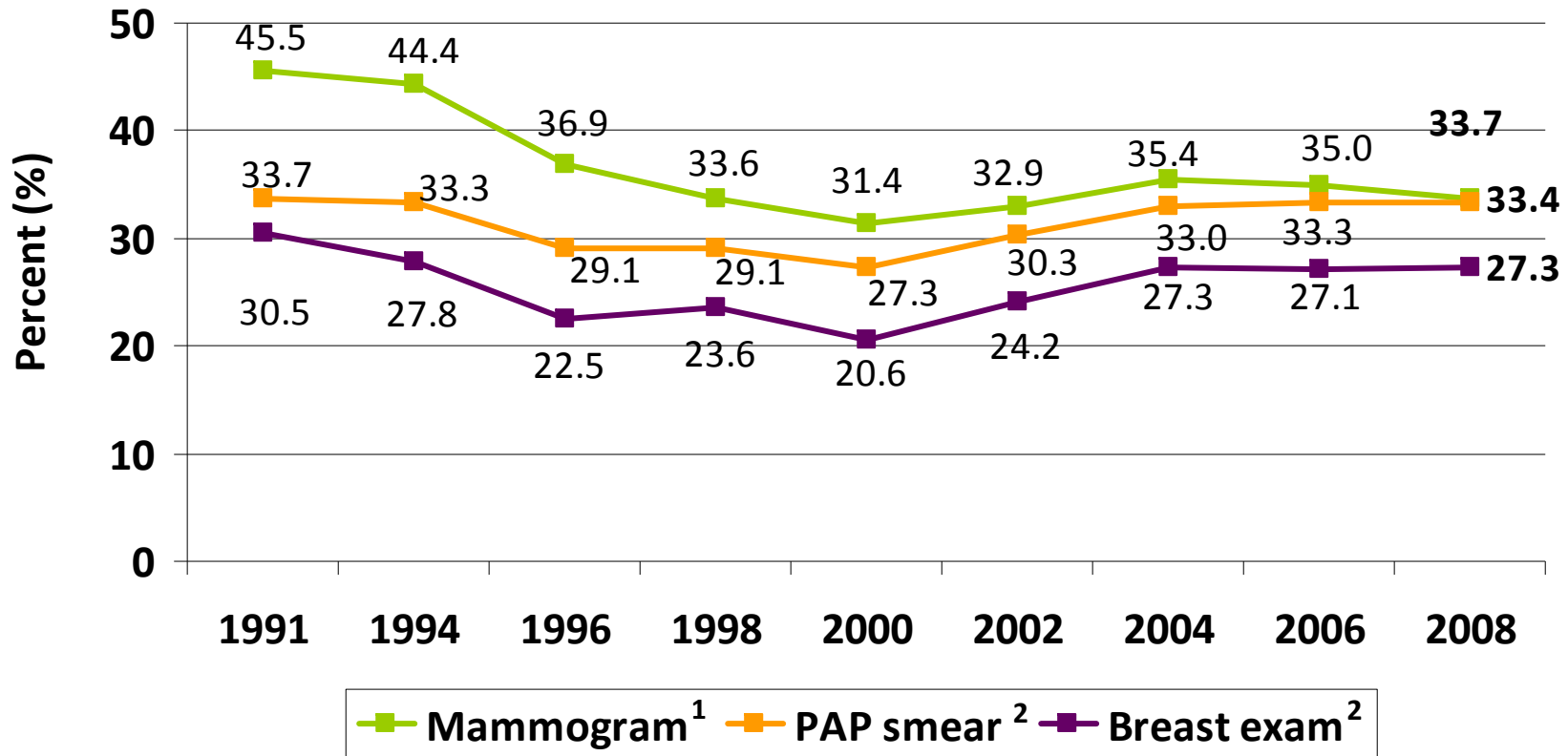
Disease Prevention & Access to Care

ACCESS TO CARE

Source and Utilization

- ✓ Regular source of care
- ✓ Setting of regular care
- ✓ Length of time since most recent medical visit
- ✓ Number of overnight stays in the hospital, past year
- ✓ Transportation barrier to healthcare
- ✓ Language barrier to healthcare
- ✓ Failure to seek healthcare, fill a prescription, due to cost

Figure 3. Women (18+) Who Did Not Receive Selected Screenings in the Past Year, Southeastern Pennsylvania, 1991-2008.



¹ Asked of female adult respondents 40 years of age and older.

² Asked of female adult respondents 18 years of age and older.

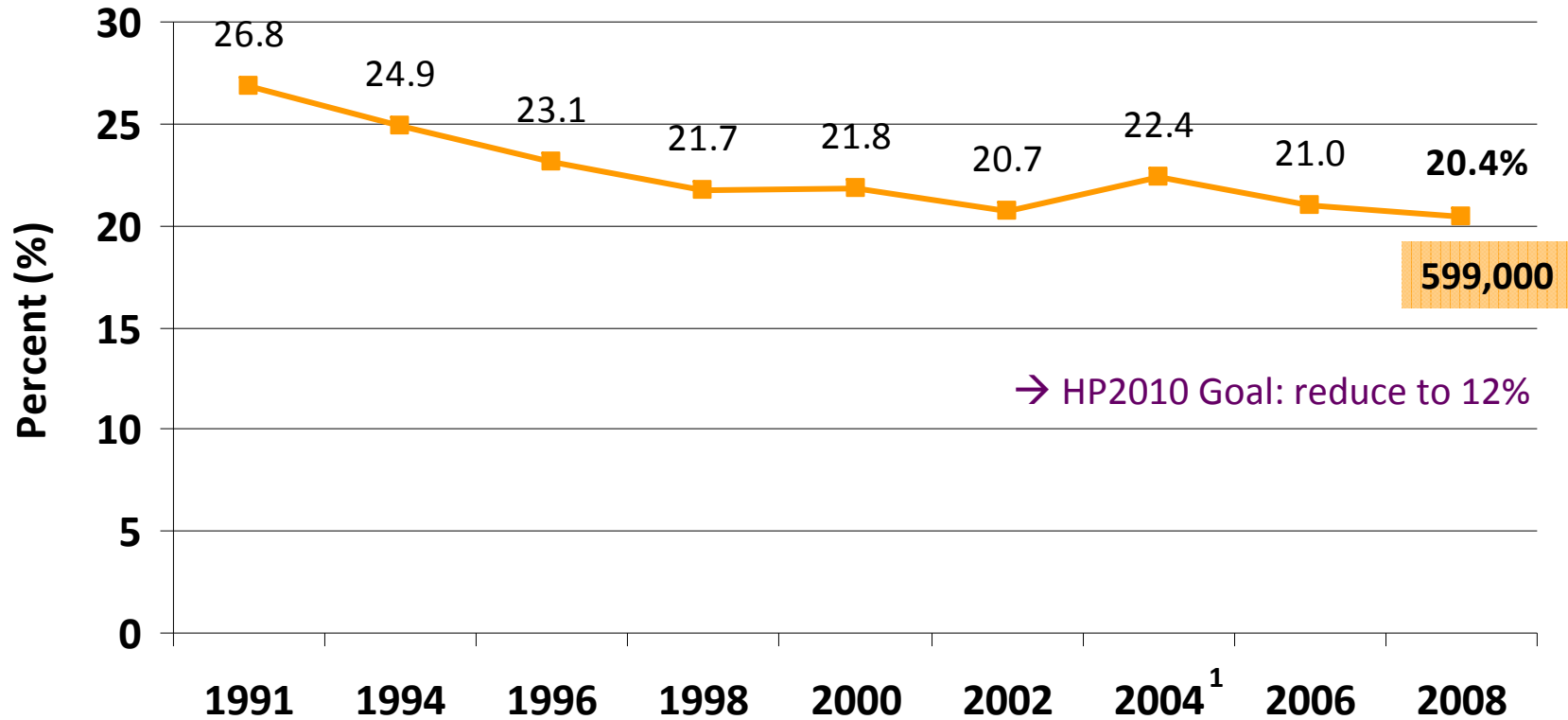
Topic Areas:

Personal Health Behaviors

- ✓ Smoking status, frequency
- ✓ Smoking quit method and duration of cessation
- ✓ Advised by a doctor to quit smoking
- ✓ Exposure to cigarette smoke in household, car
- ✓ Use of other tobacco products
- ✓ Advised by doctor to lose weight
- ✓ Number of servings of fruits & vegetables
- ✓ Fast food consumption
- ✓ Exercise frequency
- ✓ Sleep – duration and quality



Figure 4. Cigarette Smoking among Adults (18+), Southeastern Pennsylvania, 1991-2008.



1. In the 2004 and later surveys, the wording of the smoking question was changed slightly. Instead of asking respondents if they currently smoke, as was asked in previous survey years, respondents were asked if they smoke every day, some days or not at all.

Topic Areas: Health Insurance

PHMC's Household Health Survey has many questions pertaining to health insurance coverage with a special focus on at-risk populations.

- ✓ Current source(s) of health coverage, name of insurer
- ✓ Respondents without health insurance during past year: length of time; ability to get care
- ✓ What is the primary reason for lack of coverage
- ✓ Coverage for prescription drugs; dental care
- ✓ Medicare Part D
- ✓ Visited E.R. due to lack of health insurance



Figure 5. Uninsured Adults (18+) by Planning Analysis Section, Philadelphia 2008.

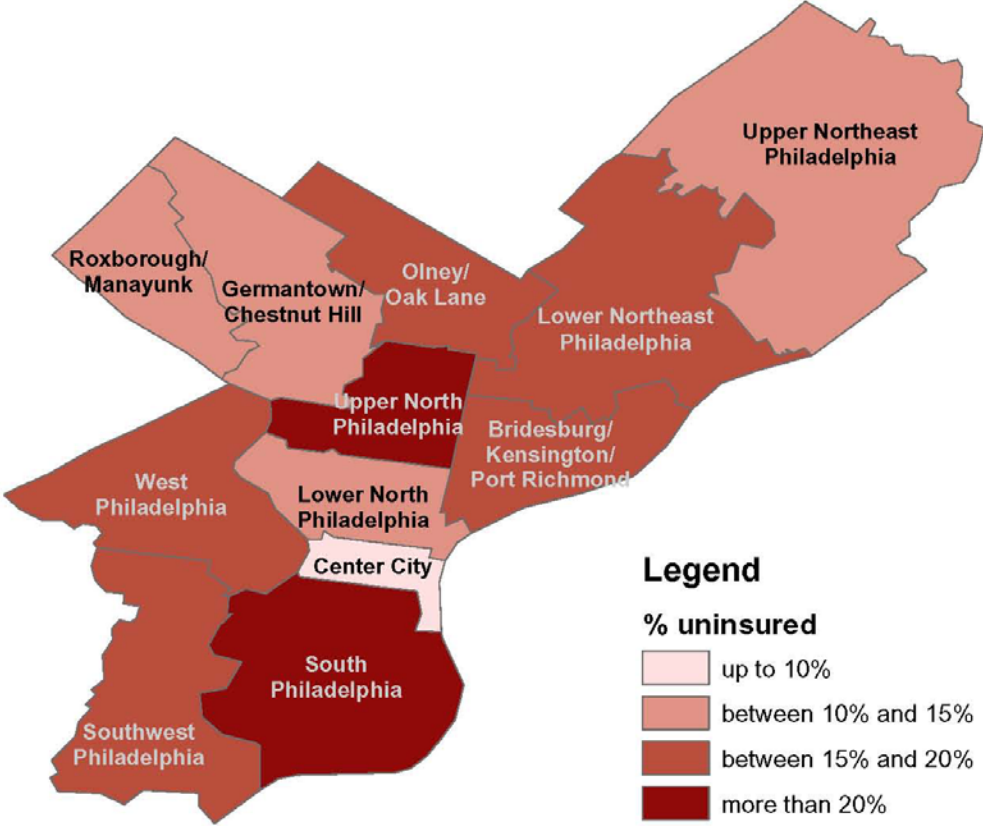
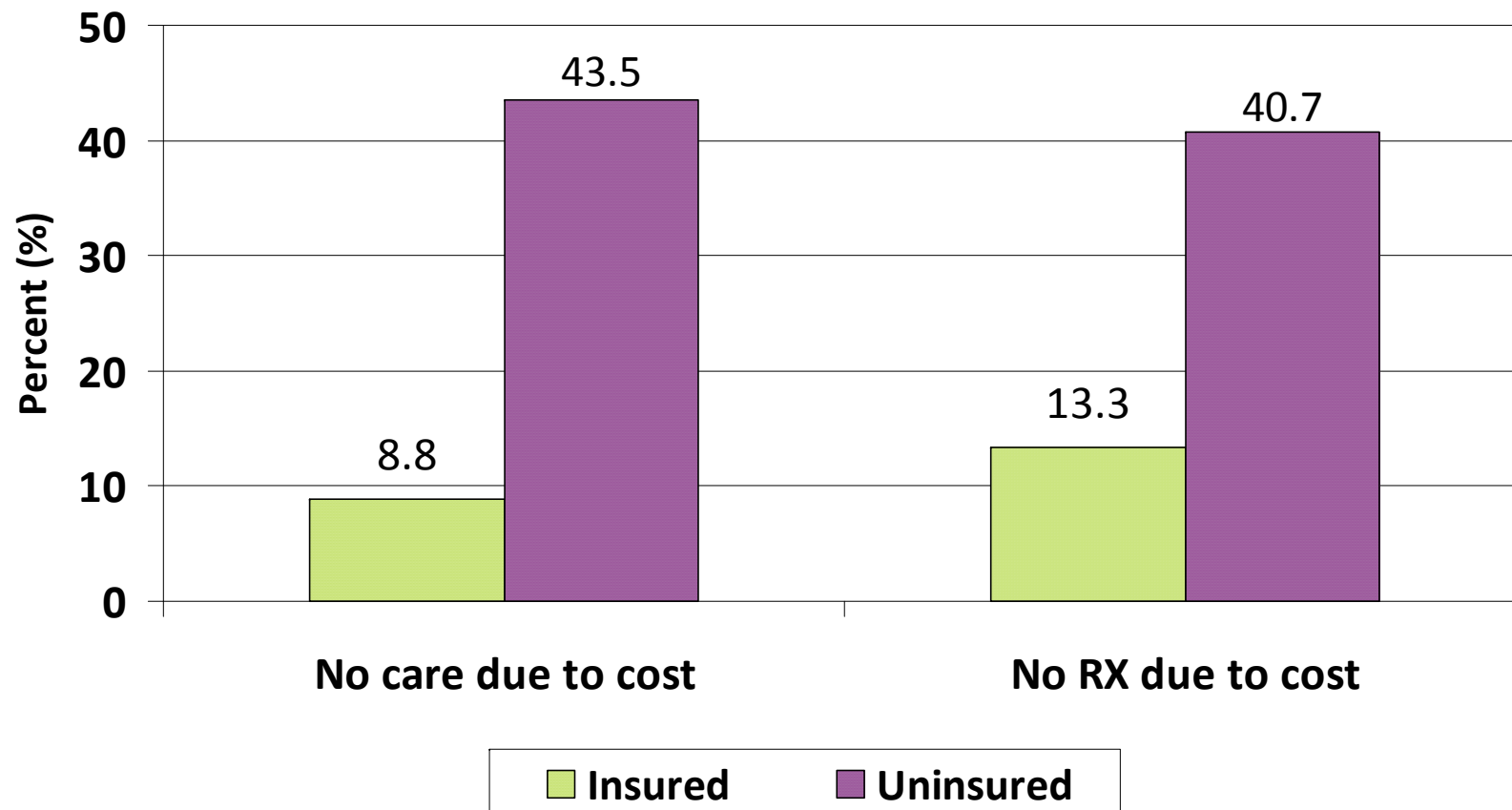


Figure 6. Cost Barriers to Health Care among Adults (18+) by Insurance Status, Southeastern Pennsylvania, 2008.



Topic Areas:

Mental Health & Environment

MENTAL HEALTH

- ✓ Diagnosed mental health condition
- ✓ Receiving treatment for mental health condition
- ✓ Older adult depression scale
- ✓ Level of stress in the past year
- ✓ Use of professional mental health services

SAFETY & VIOLENCE

- ✓ Firearms in the home
- ✓ Firearms kept in a locked place/trigger lock
- ✓ Personal safety (feeling of safety in community)

Topic Areas:

Social Capital and Neighborhood

SOCIAL CAPITAL

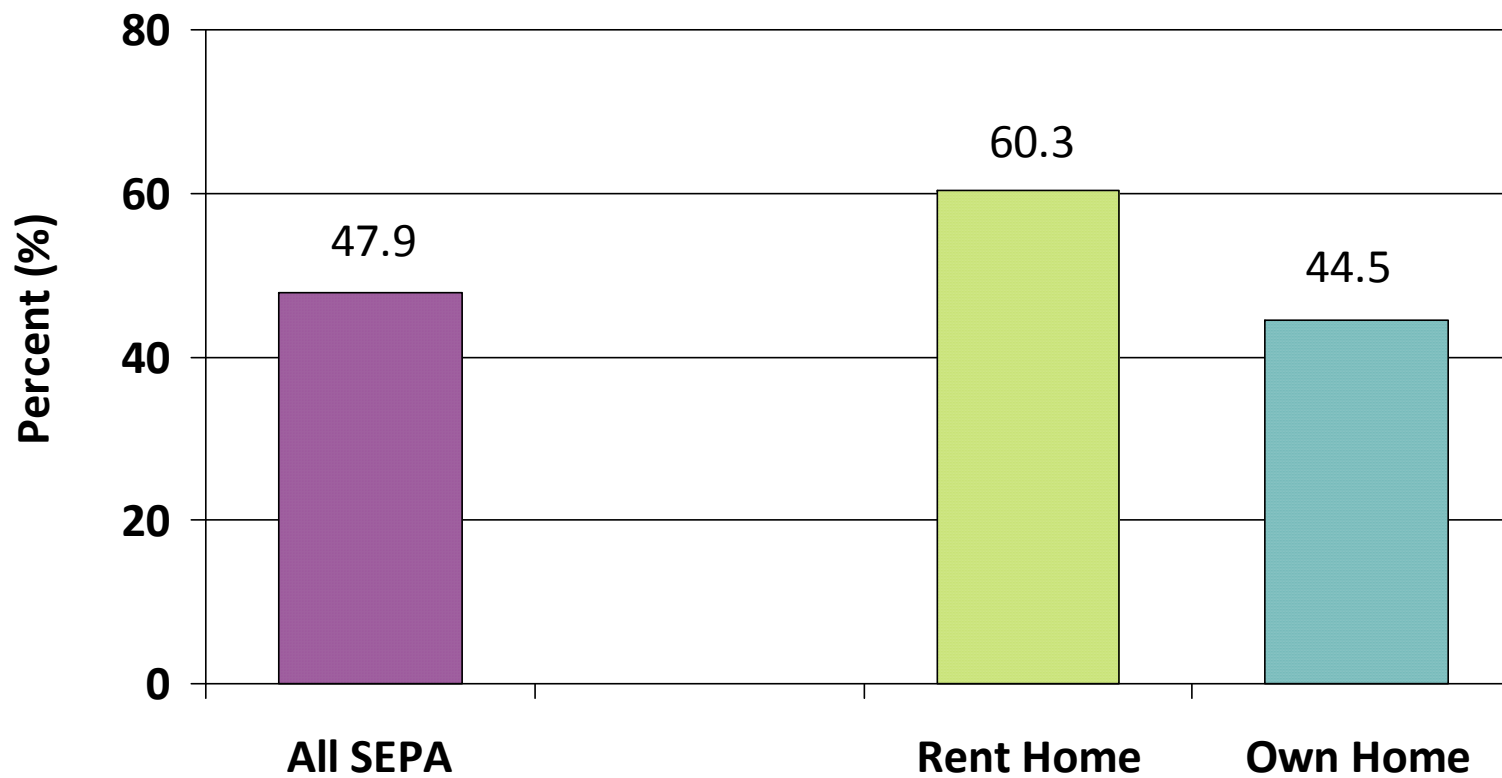
- ✓ Involvement in local groups & organizations
- ✓ Willingness of community to help neighbors
- ✓ Neighbors have worked together
- ✓ Community improvement
- ✓ Sense of belonging to the community
- ✓ Feelings of trust in the community



HOUSING & NEIGHBORHOOD

- ✓ Access to fresh produce
- ✓ Use of neighborhood recreational facilities
- ✓ Reasons for physical inactivity
- ✓ Affordable housing
- ✓ Rent or own home

Figure 8. Percent Adults (18+) Who Report Difficulty Paying Monthly Housing Costs, SEPA, 2008



Data Source: 2008 SEPA Household Health Surveys. Public Health Management Corporation, Community Health Data Base, 2010.

Topic Areas:

Older Adult Supplement (Ages 60+)

Older adults are extensive users of health care. The survey includes a series of questions about older adults, their health, happiness, and ability to live independently.

- ✓ **Housing and environment**
- ✓ **Use of aids** and prosthetic devices
- ✓ Home health services and caregiving
- ✓ Use of formal in-home care and payment
- ✓ **IADL Impairments** (i.e. using phone, shopping walking, meal prep, cleaning, handling money, etc.)
- ✓ **ADL Impairments** (i.e. bathing, grooming, eating, etc.)
- ✓ **Use of informal help** with IADL and ADL
- ✓ **Social supports & services:** contact with friends and relatives, familiarity, use, and need for activities at senior center, food programs, transportation, PACE/prescription drug assistance, senior helpline



Additional Topic Areas: Socio-demographics

- ✓ Age
- ✓ Gender
- ✓ Employment status
- ✓ Education
- ✓ Race
- ✓ Ethnicity: Hispanic or Latino descent

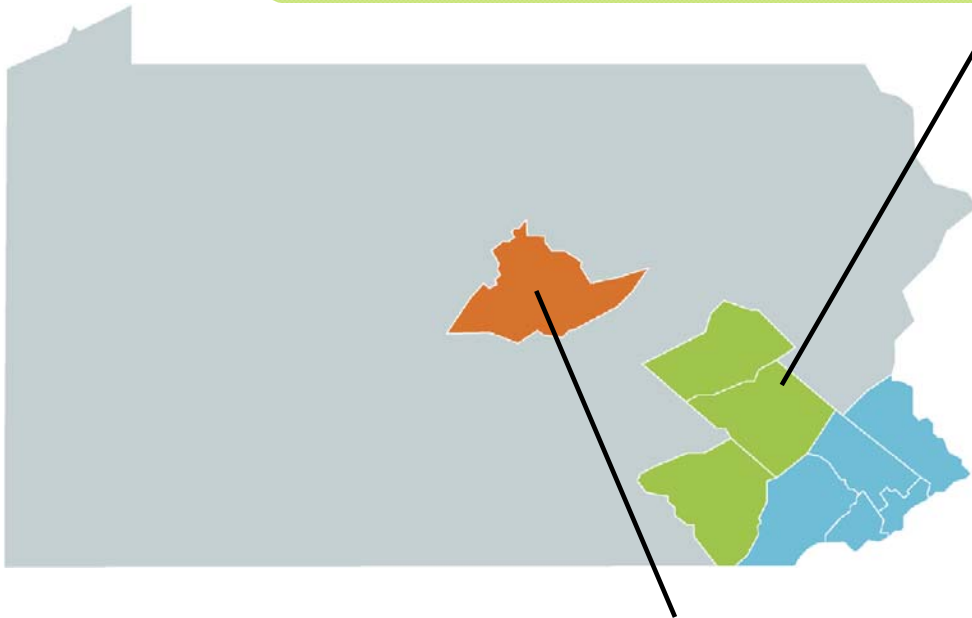
- ✓ Income
- ✓ Marital status
- ✓ Sexual Identity
- ✓ Welfare (TANF, SSI, SSDI, GA, WIC)
- ✓ Religious affiliation & attendance
- ✓ Country of birth
- ✓ Speak language other than English in home/language
- ✓ Experiences of racial/ethnic discrimination
- ✓ Geographic location



Survey Expansion

Berks-Lancaster-Schuylkill Household Health Survey – 2008 & 2011

1,000 interviews conducted per county (3,000 total)



Centre County Household Health Survey – 2009

1,250 interviews conducted including 250 cell phone interviews

Pet Ownership among Older Adults

Menu Labeling

Disability Status

Addiction and Recovery Experiences

Commuting

HIV status

Problem Gambling Behavior

Attitudes about Addiction

Cigarette Purchases

Sugary Beverage Consumption

Internet Access and Use

Pet Ownership among Older Adults

Do older adults (60+) have pets at home?
What types of animals do older adults keep as pets?

Pet Ownership among Older Adults

Menu Labeling

Disability Status

Addiction and Recovery Experiences

Commuting

HIV status

Problem Gambling Behavior

Attitudes about Addiction

Cigarette Purchases

Sugary Beverage Consumption

Internet Access and Use

Menu Labeling

Do Philadelphia residents notice new nutrition data posted at chain restaurants?

Does this information influence food purchases?

Pet Ownership among Older Adults

Menu Labeling

Disability Status

Addiction and Recovery Experiences

Commuting

HIV status

Problem Gambling Behavior

Attitudes about Addiction

Cigarette Purchases

Sugary Beverage Consumption

Internet Access and Use

Disability Status

Do adults 18+ have physical,
mental or emotional
disabilities or conditions ?

Pet Ownership among Older Adults

Menu Labeling

Disability Status

Addiction and Recovery Experiences

Commuting

HIV status

Problem Gambling Behavior

Attitudes about Addiction

Cigarette Purchases

Sugary Beverage Consumption

Internet Access and Use

Addiction and Recovery Experiences

Are adults currently in recovery from alcohol or drug addiction?

Do adults have family members or know other people who are in recovery?

Pet Ownership among Older Adults

Menu Labeling

Disability Status

Addiction and Recovery Experiences

Commuting

HIV status

Problem Gambling Behavior

Attitudes about Addiction

Cigarette Purchases

Sugary Beverage Consumption

Internet Access and Use

Commuting

In what ZIP Code do adults spend their time away from home?

How do SEPA residents travel to and from the places they go during the day?

Pet Ownership among Older Adults

Menu Labeling

Disability Status

Addiction and Recovery Experiences

Commuting

HIV status

Problem Gambling Behavior

Attitudes about Addiction

Cigarette Purchases

Sugary Beverage Consumption

Internet Access and Use

Have adults in SEPA been diagnosed with HIV?

HIV status

(In conjunction with
existing HIV testing
question:
length of time
since last HIV test)

Pet Ownership among Older Adults

Menu Labeling

Disability Status

Addiction and Recovery Experiences

Commuting

HIV status

Problem Gambling Behavior

Attitudes about Addiction

Cigarette Purchases

Sugary Beverage Consumption

Internet Access and Use

Do adults in SEPA gamble?

Problem Gambling Behavior

Do adults in SEPA exhibit problem gambling behaviors?

Pet Ownership among Older Adults

Menu Labeling

Disability Status

Addiction and Recovery Experiences

Commuting

HIV status

Problem Gambling Behavior

Attitudes about Addiction

Cigarette Purchases

Sugary Beverage Consumption

Internet Access and Use

Do adults in SEPA believe that others with addictions can fully recover?

Should people with addictions be punished?

Should communities support addiction treatment?

Attitudes about Addiction

How is the quality of local addiction treatment?

Pet Ownership among Older Adults

Menu Labeling

Disability Status

Addiction and Recovery Experiences

Commuting

HIV status

Problem Gambling Behavior

Attitudes about Addiction

Cigarette Purchases

Sugary Beverage Consumption

Internet Access and Use

Where do smokers in Philadelphia buy their cigarettes?

Do Philadelphia smokers buy loose cigarettes?

Cigarette Purchases

Do Philadelphians know where loose cigarettes are sold?

Pet Ownership among Older Adults

Menu Labeling

Disability Status

Addiction and Recovery Experiences

Commuting

HIV status

Problem Gambling Behavior

Attitudes about Addiction

Cigarette Purchases

Sugary Beverage Consumption

Internet Access and Use

How often do adults
and children in Philadelphia
drink sodas?

How often do adults
and children in
Philadelphia drink
fruit drinks and teas?

Sugary Beverage Consumption

Pet Ownership among Older Adults

Menu Labeling

Disability Status

Addiction and Recovery Experiences

Commuting

HIV status

Problem Gambling Behavior

Attitudes about Addiction

Cigarette Purchases

Sugary Beverage Consumption

Internet Access and Use

Do adults in SEPA have
Internet access
at home?

Do adults in SEPA use
the Internet at home?

Why don't adults in
SEPA use the
Internet at home?

Internet Access and Use

II. Demographics: 2000 U.S. Census

The Community Health Data Base provides access to past and present data from the U.S. Census Bureau. Data can be aggregated on the same geographic levels as the Household Health Survey, including ZIP Code and neighborhood.

The Data Base uses a third-party data source (Claritas, Inc.) to create estimates and projections based on the decennial Census. The most current include:

- Population counts for 2000
- Estimates for 2006, 2008
- Projections for 2011, 2013

II. Demographics: 2000 U.S. Census (Cont.)

- Population Totals
- Age Distribution
- Racial/Ethnic Distribution
- Gender Distribution
- Household Income
- Average Household Size
- Linguistically Isolated
- Citizenship
- Housing Units
- Elderly Living Alone
- Year House Built
- Length of Time at Residence
- Median Housing Value
- Educational Status
- Employment/Occupation
- Poverty Status
- Female-Headed Households
- Mobility and Self-Care

III. Vital Statistics

The most recent data, provided in four year average annualized rates, are from 2003-2006. They are available at the ZIP code and county level for all of Southeastern Pennsylvania and by Census tract for Philadelphia County.

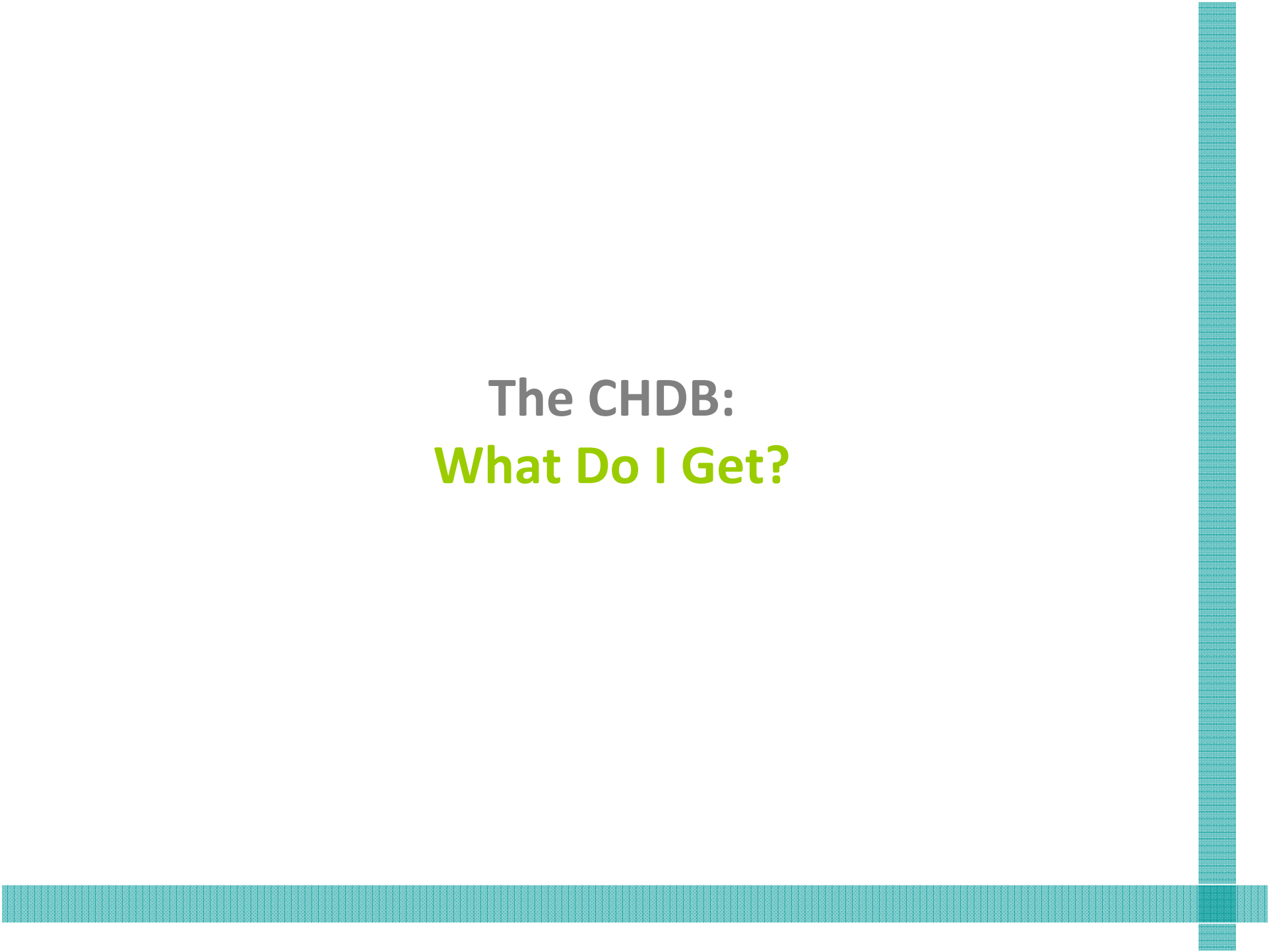
Birth Data:

- Births to all Women
- Births to Women 15-44
- Births to Adolescent Women
- Low Birthweight Births
- Prenatal Care

Mortality Data:

- All Causes
- Heart Disease
- All Cancer
- Lung, Breast Cancers
- Neonatal Death
- Infant Mortality
- Stroke
- Pneumonia/Influenza
- Accidents/Drugs

The CHDB:
What Do I Get?



The Community Health Data Base

What do I get?



Data – Household Health Survey, Demographics, Vital Statistics

Direct Assistance – assigned research associate

Special Events – skill building seminars, orientations, data development

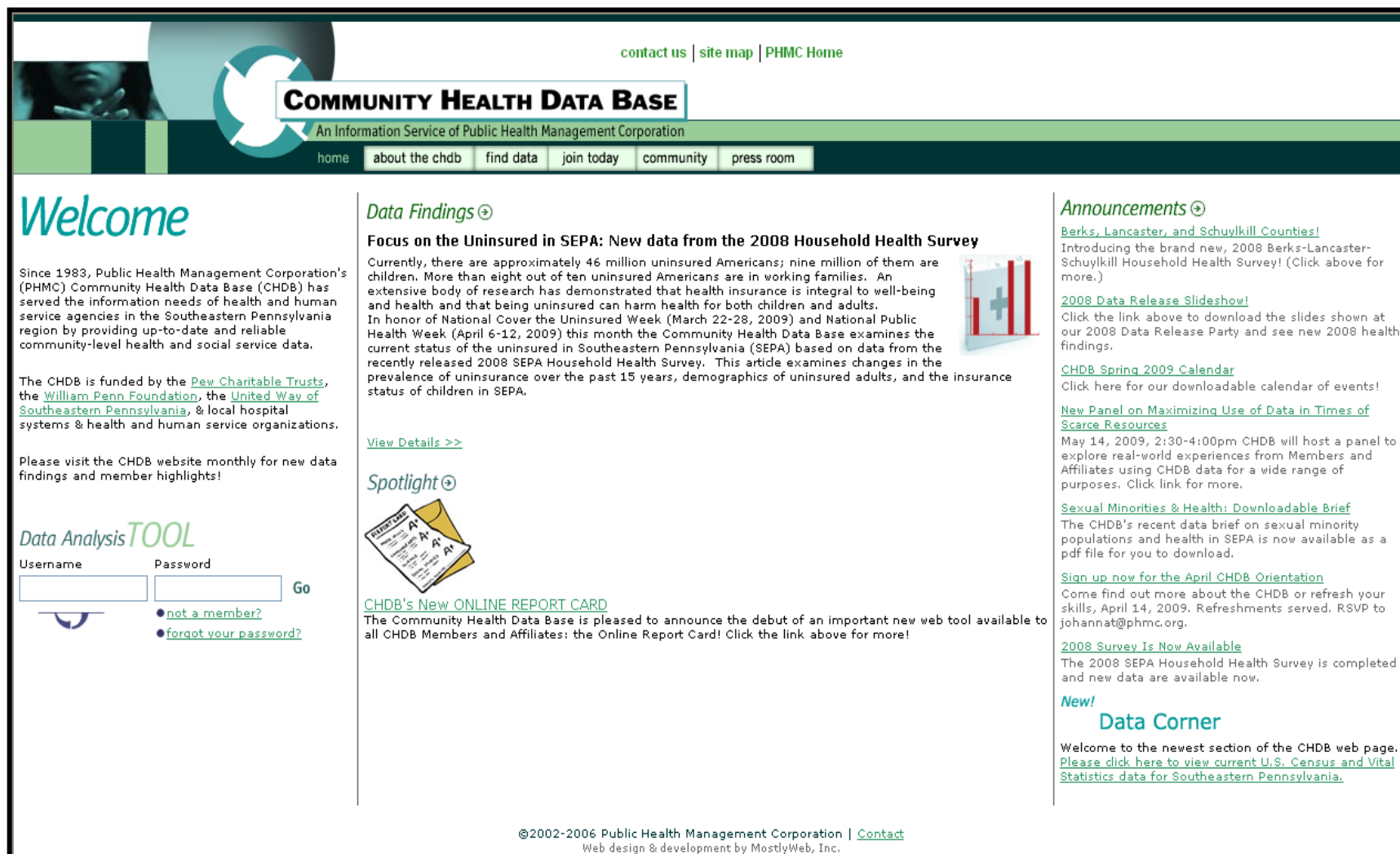
Reports and Publications – hard copy, online, e-mail

Website – www.CHDBdata.org

Including dynamic online tools for quick access to customized data runs...



CHDB Website: Updated Monthly



The screenshot shows the CHDB website homepage with a green and white color scheme. At the top, there are navigation links for 'contact us', 'site map', and 'PHMC Home'. The main header features the 'COMMUNITY HEALTH DATA BASE' logo and the tagline 'An Information Service of Public Health Management Corporation'. Below the header is a navigation menu with links for 'home', 'about the chdb', 'find data', 'join today', 'community', and 'press room'. The main content area is divided into three columns. The left column has a 'Welcome' section, a 'Data Analysis TOOL' login form, and a 'Data Findings' section. The middle column features a 'Spotlight' section with a graphic of report cards. The right column contains an 'Announcements' section with several news items. At the bottom, there is a copyright notice and contact information.

contact us | site map | PHMC Home

COMMUNITY HEALTH DATA BASE

An Information Service of Public Health Management Corporation

home about the chdb find data join today community press room

Welcome

Since 1983, Public Health Management Corporation's (PHMC) Community Health Data Base (CHDB) has served the information needs of health and human service agencies in the Southeastern Pennsylvania region by providing up-to-date and reliable community-level health and social service data.

The CHDB is funded by the [Pew Charitable Trusts](#), the [William Penn Foundation](#), the [United Way of Southeastern Pennsylvania](#), & local hospital systems & health and human service organizations.

Please visit the CHDB website monthly for new data findings and member highlights!

Data Analysis TOOL

Username Password

- [not a member?](#)
- [forgot your password?](#)

Data Findings

Focus on the Uninsured in SEPA: New data from the 2008 Household Health Survey

Currently, there are approximately 46 million uninsured Americans; nine million of them are children. More than eight out of ten uninsured Americans are in working families. An extensive body of research has demonstrated that health insurance is integral to well-being and health and that being uninsured can harm health for both children and adults. In honor of National Cover the Uninsured Week (March 22-28, 2009) and National Public Health Week (April 6-12, 2009) this month the Community Health Data Base examines the current status of the uninsured in Southeastern Pennsylvania (SEPA) based on data from the recently released 2008 SEPA Household Health Survey. This article examines changes in the prevalence of uninsurance over the past 15 years, demographics of uninsured adults, and the insurance status of children in SEPA.

[View Details >>](#)

Spotlight

CHDB's New ONLINE REPORT CARD

The Community Health Data Base is pleased to announce the debut of an important new web tool available to all CHDB Members and Affiliates: the Online Report Card! Click the link above for more!

Announcements

[Berks, Lancaster, and Schuylkill Counties!](#)
Introducing the brand new, 2008 Berks-Lancaster-Schuylkill Household Health Survey! (Click above for more.)

[2008 Data Release Slideshow!](#)
Click the link above to download the slides shown at our 2008 Data Release Party and see new 2008 health findings.

[CHDB Spring 2009 Calendar](#)
Click here for our downloadable calendar of events!

[New Panel on Maximizing Use of Data in Times of Scarce Resources](#)
May 14, 2009, 2:30-4:00pm CHDB will host a panel to explore real-world experiences from Members and Affiliates using CHDB data for a wide range of purposes. Click link for more.

[Sexual Minorities & Health: Downloadable Brief](#)
The CHDB's recent data brief on sexual minority populations and health in SEPA is now available as a pdf file for you to download.

[Sign up now for the April CHDB Orientation](#)
Come find out more about the CHDB or refresh your skills, April 14, 2009. Refreshments served. RSVP to johannat@phmc.org.

[2008 Survey Is Now Available](#)
The 2008 SEPA Household Health Survey is completed and new data are available now.


New!

Data Corner

Welcome to the newest section of the CHDB web page. [Please click here to view current U.S. Census and Vital Statistics data for Southeastern Pennsylvania.](#)

©2002-2006 Public Health Management Corporation | [Contact](#)
Web design & development by MostlyWeb, Inc.

To receive the Community Health Data Base's monthly e-mail newsletter, including the latest facts and findings from the Southeastern Pennsylvania Household Health Survey, please email: johannat@phmc.org



**For more information about the
Community Health Data Base, please
contact us at 215-985-2548 or visit
www.CHDBdata.org**