

# Collecting & Utilizing Reliable, Local Community-Based Health Information

**An Overview of PHMC's  
Community Health Data Base**

**2010**

# About PHMC

*Public Health Management Corporation (formerly Philadelphia Health Management Corporation) is a non-profit public health institute offering a diverse mix of programs and services. For more: [www.phmc.org](http://www.phmc.org)*

Addictions Services

Health Promotion, Injury Prevention

Criminal Justice Treatment Initiatives

Early Intervention Service for Infants and Toddlers

HIV/AIDS Prevention

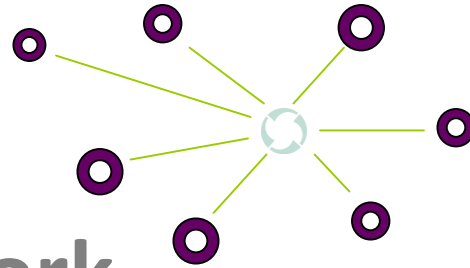
Nurse Managed Care

Services to Homeless

Research and Evaluation (R&E)



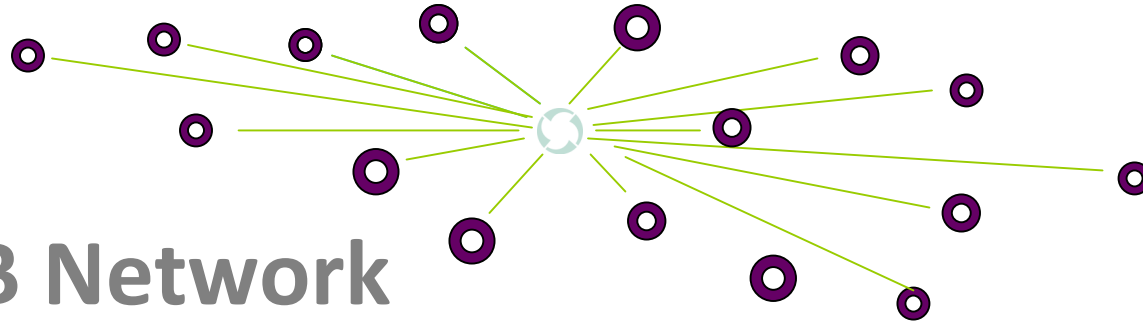
**Introduction:**  
**What is the Community Health Data Base?**



# The CHDB Network

## Who participates in the Community Health Data Base?

**Foundations** – The Pew Charitable Trusts; William Penn Foundation; United Way of Southeastern Pennsylvania; CIGNA Foundation; Green Tree Community Health Foundation; Philadelphia Foundation; and the Thomas Scattergood Foundation.



# The CHDB Network

## Who participates in the Community Health Data Base?

**Foundations** – The Pew Charitable Trusts; William Penn Foundation; United Way of Southeastern Pennsylvania; CIGNA Foundation; Green Tree Community Health Foundation; Philadelphia Foundation; and the Thomas Scattergood Foundation.

**Members** – Hospitals, health systems, managed care organizations, universities, and government agencies.



# The CHDB Network

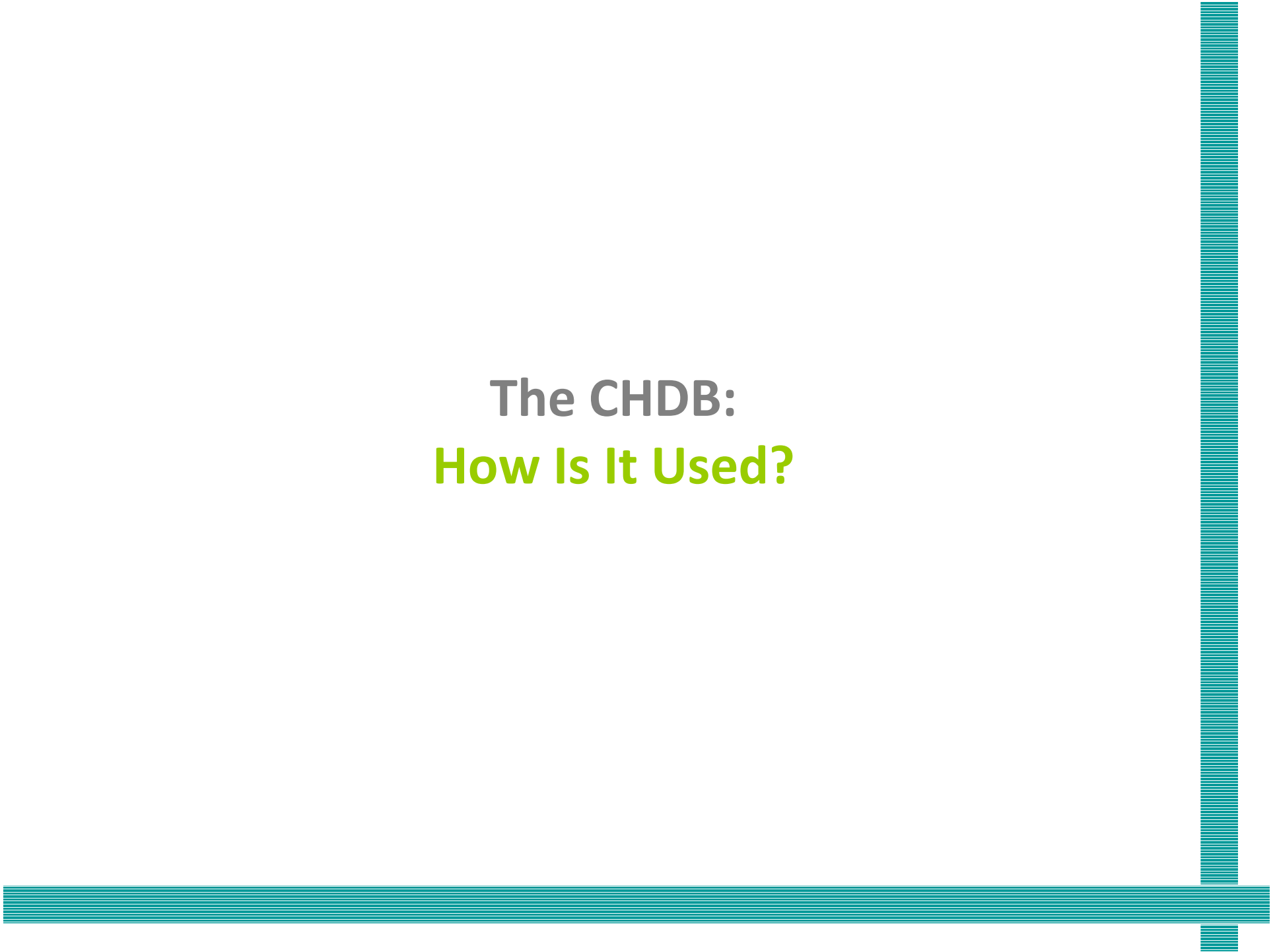
## Who participates in the Community Health Data Base?

**Foundations** – The Pew Charitable Trusts; William Penn Foundation; United Way of Southeastern Pennsylvania; CIGNA Foundation; Green Tree Community Health Foundation; Philadelphia Foundation; and the Thomas Scattergood Foundation.

**Members** – Hospitals, health systems, managed care organizations, colleges and universities, and government agencies.

**Affiliates** – more than 350 community-based organizations from across the five-county region.

**The CHDB:**  
**How Is It Used?**



# Strategic Local Research

A wide range of institutions and agencies use the Community Health Data Base for...

Needs  
assessments

Strategic growth  
decisions, facility  
planning

Disease management  
initiatives

Marketing &  
outreach

Grantwriting, development, &  
institutional advancement

Community health  
programming

Teaching &  
academic research

Advocacy &  
public relations

# Teaching Tool:

## Ideas from CHDB Academic Members

### UNIVERSITY OF PENNSYLVANIA

Students map CHDB data, and take an observational walking tour of a Philadelphia neighborhood with data findings in mind. They assess the built environment and discuss needed interventions and resources.

### UNIVERSITY OF THE SCIENCES IN PHILADELPHIA

Students use CHDB data to develop community needs assessments and design tailored interventions. They develop research questions and analyze HHS data.

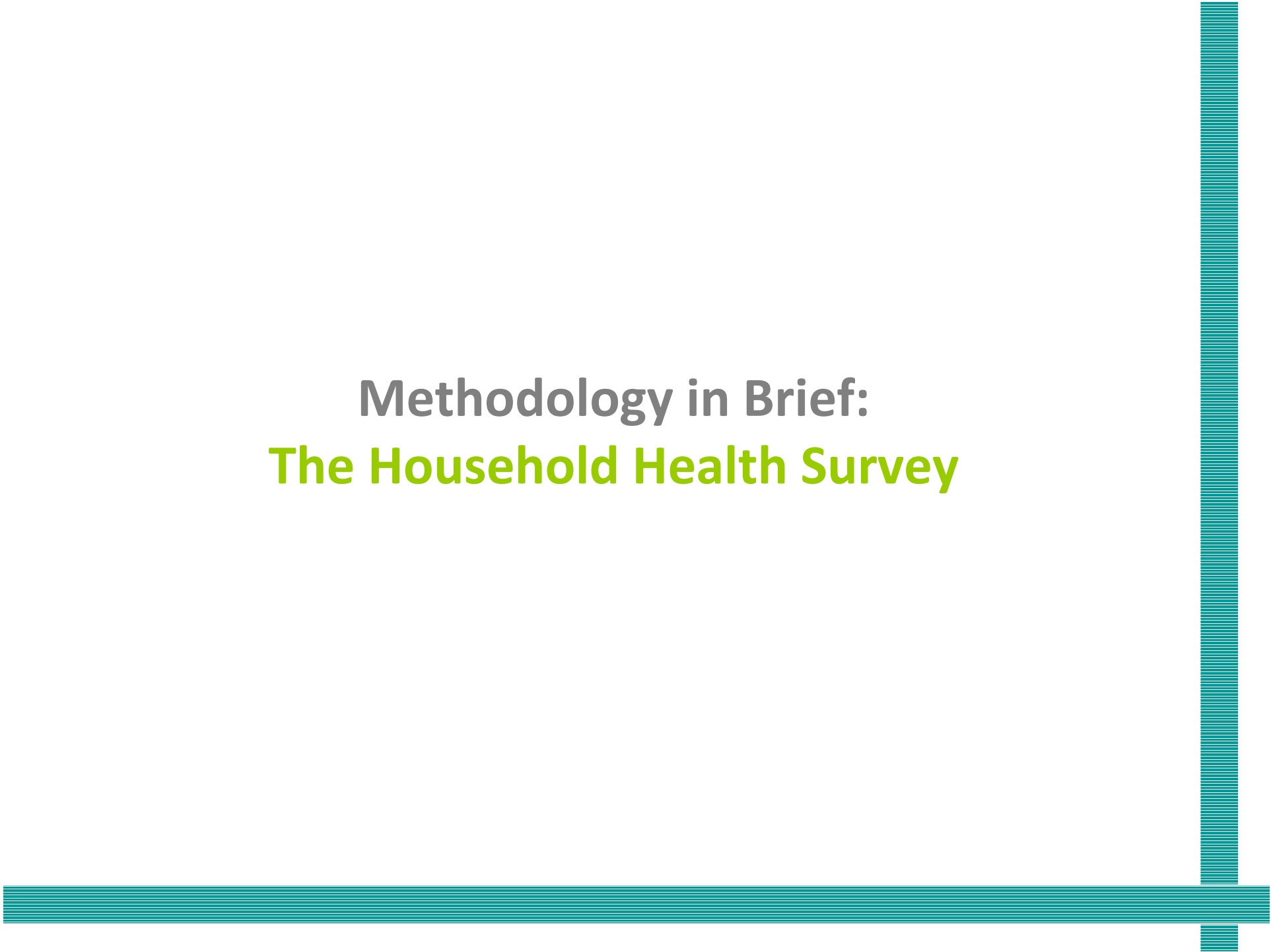
Local universities and colleges use CHDB data for research and teaching. The CHDB has 14 academic Members.

**Data Sources:**  
**What Data Can I Access Through the CHDB?**

# Data Sources

- I. Southeastern Pennsylvania Household Health Survey:** This is the CHDB's proprietary data set.
- II. U.S. Census:** The CHDB provides selected data from the Census in useful aggregates and incorporates third-party data to provide interim projections
- III. Vital Statistics:** Data from the State of PA formatted to provide epidemiological information on births and deaths.

**Methodology in Brief:**  
**The Household Health Survey**



# Southeastern Pennsylvania Household Health Survey (I)

- Survey began in 1983
- Since 1994, fielded every other year
- Interviews conducted by telephone using **random digit dial**
- Interviews conducted in **10,000 households every two years.**
  - About 3,000 additional interviews about a selected conducted with a child proxy
  - Total sample size: about **13,000 adults and children**



# Southeastern Pennsylvania Household Health Survey (II)

- Geographic Reach:
  - Bucks
  - Chester
  - Delaware
  - Montgomery, and
  - Philadelphia Counties



**A trusted and comprehensive source of community health data for the region**

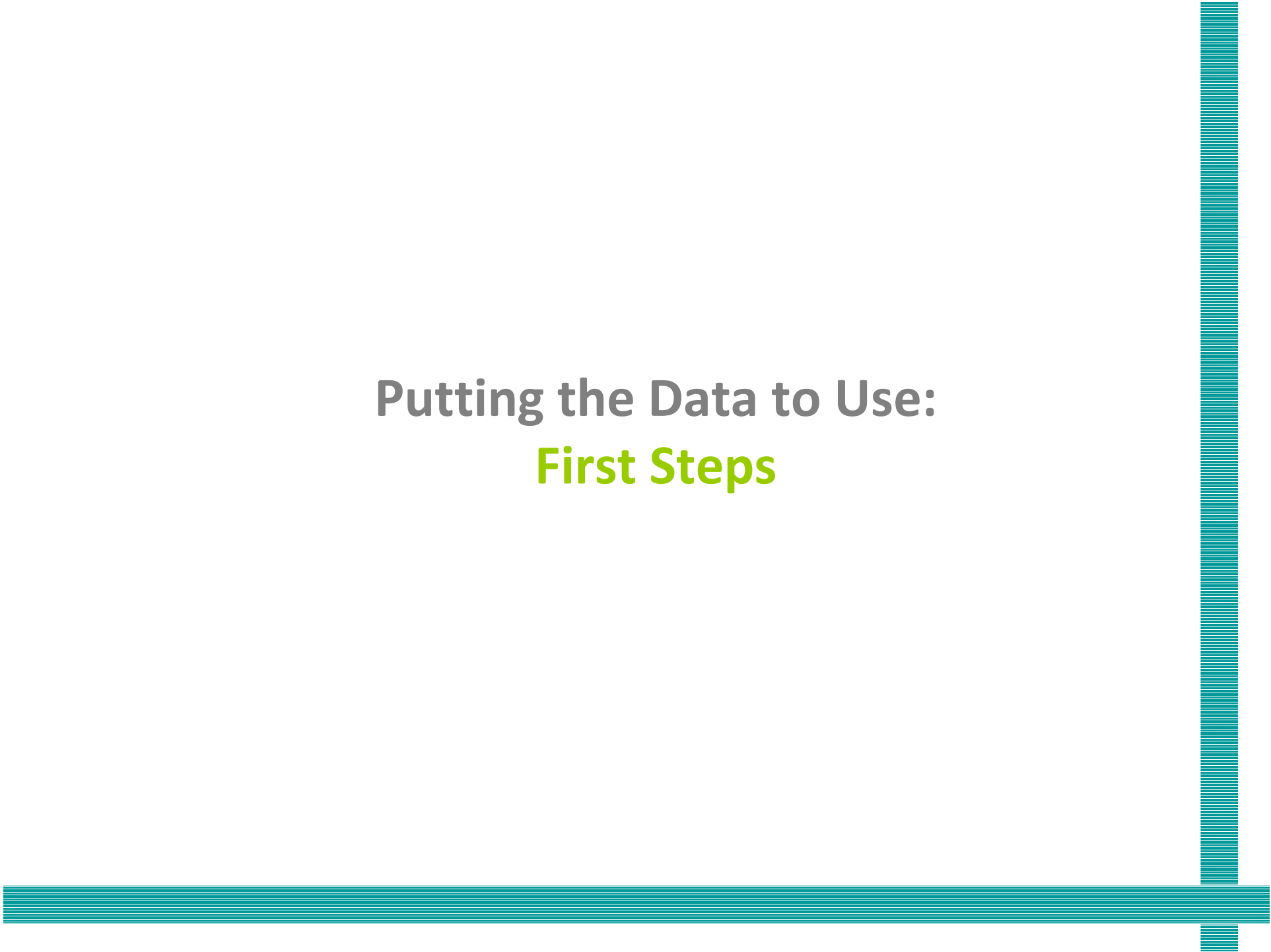
- Adult & child respondents selected using last birthday method.
- Oversample of persons 60+ and 75+
- Interviews in English & Spanish. Foreign-language proxy, if needed.

# Southeastern Pennsylvania Household Health Survey (III)

- Dramatic rise in wireless-only households in recent years
- To address: CHDB introduced a cell phone sampling frame in 2008
  - Philadelphia-only pilot study
  - 300 cell-based interviews
- New challenges:
  - Higher cost due to cell phone number portability, hand-dialing, compensation for participants, and high proportion of cell users under 18 years
- Cell phone interviews expansion in 2010!
  - 1,000 interviews across 5-county area



Putting the Data to Use:  
**First Steps**



# Defining Your Community

## GEOGRAPHIC

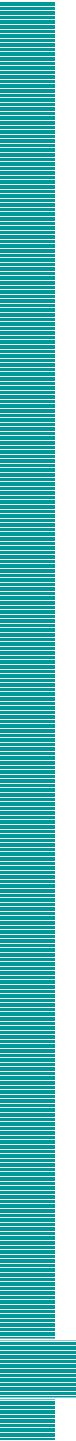
- Neighborhoods
- Census tracts
- ZIP codes
- Planning Analysis Sections
- Health districts
- Suburban townships
- County, region

## DEMOGRAPHIC

- Any age/age group
- Women
- Children
- Older adults
- Ethnic and racial groups
- Below poverty level
- Uninsured
- Many other demos

**More than 10,000 randomly selected households.**  
3,000 additional interviews regarding children living in those households—  
for a total of **13,000+ interviews.**

**Putting the Data to Use:  
Household Health Survey  
Topic Areas and Examples**



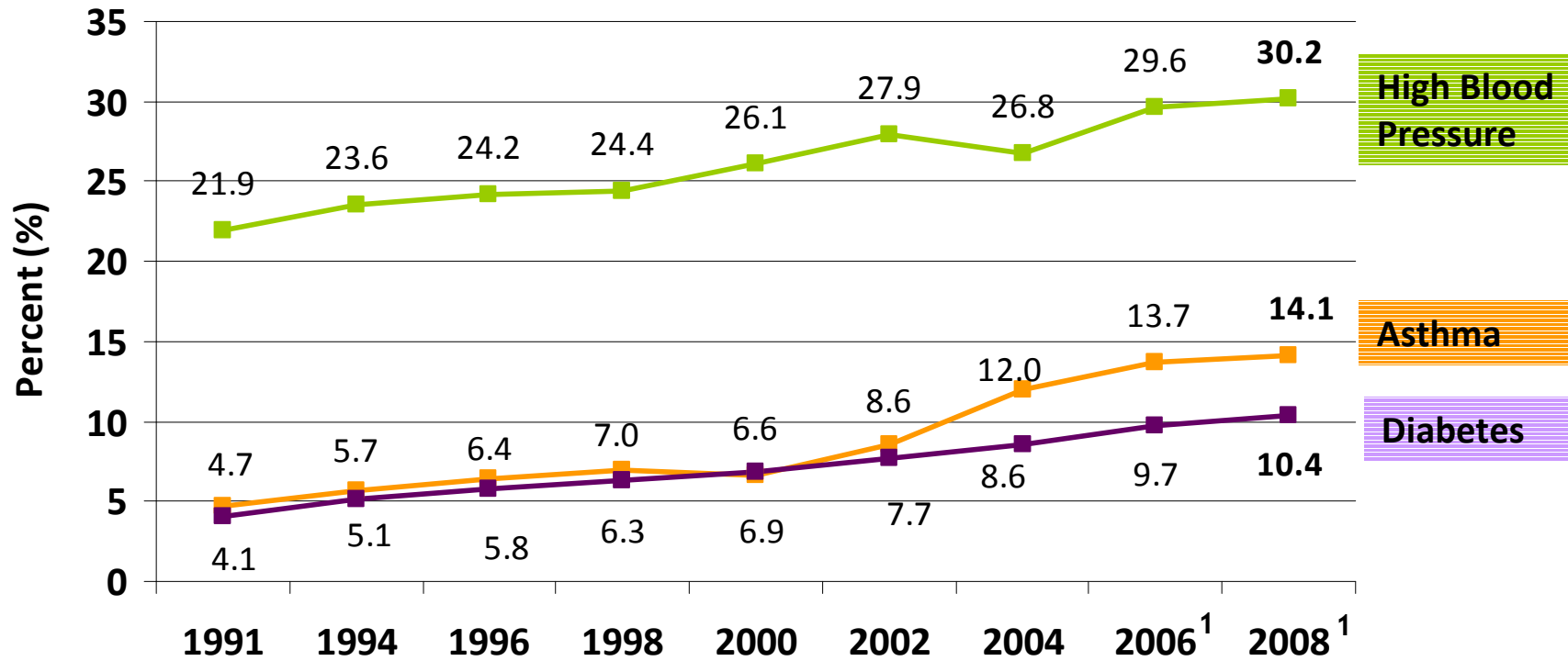
## Topic Areas: **Health Status**

- ✓ Self-reported health status
- ✓ Chronic health conditions: Asthma, Diabetes, high blood pressure & cholesterol
- ✓ Use of prescription medications for asthma
- ✓ Hypertension and high cholesterol control
- ✓ Obesity (BMI calculation)



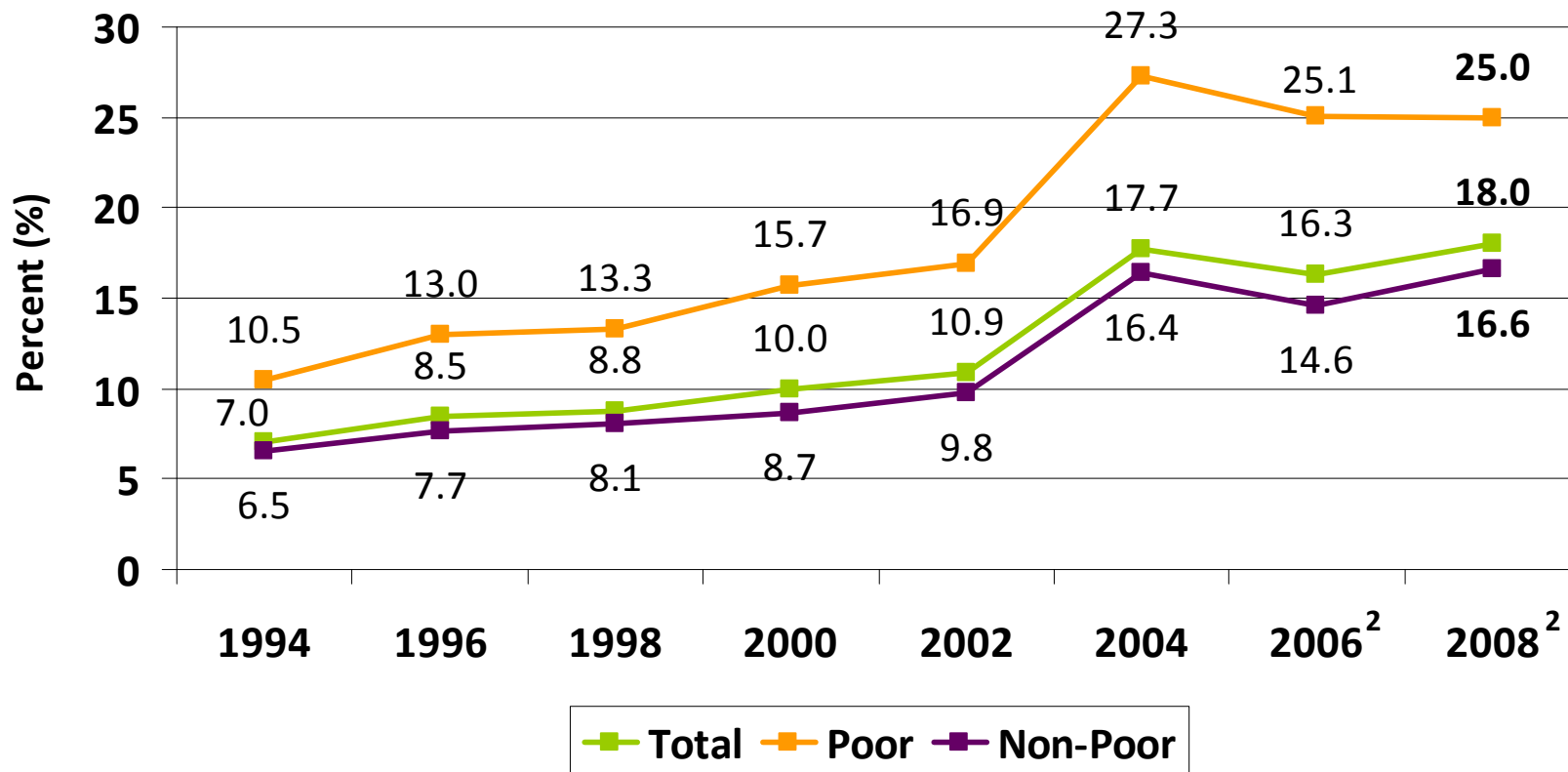
Documenting and monitoring health status, chronic conditions, and health disparities has been a keystone of PHMC's Southeastern Pennsylvania Household Health Survey for more than 25 years.

# Figure 1. Chronic Health Conditions among Adults (18+), Southeastern Pennsylvania, 1991-2008.



<sup>1</sup>In the 2004 and later surveys, the wording of the question about asthma and diabetes was changed slightly: respondents were asked if they EVER had asthma or diabetes. In past survey years, respondents were asked if they currently have asthma and diabetes.

## Figure 2. Asthma among Children (0-17) by Poverty Status<sup>1</sup>, Southeastern Pennsylvania, 1994-2008.



<sup>1</sup> Poverty level is defined as below or above 100% of the Federal Poverty Level. Poverty level is calculated based on family size and household income. For example, a family of four with an annual income of \$21,200 in 2008 was considered living in poverty.

<sup>2</sup> In the 2004 and later surveys, the wording of the question about asthma was changed slightly: respondents were asked if they ever had asthma. In past survey years, respondents were asked if they currently have asthma.

# Topic Areas:

## Disease Prevention & Access to Care

### DISEASE PREVENTION

#### Routine Screening and Exams

- ✓ Dental visit
- ✓ Eye examination
- ✓ Blood pressure reading
- ✓ Cholesterol check
- ✓ HIV Testing
- ✓ Pap smear
- ✓ Clinical breast exam
- ✓ Mammogram (40+)
- ✓ Prostate (45+)
- ✓ Flu, pneumonia vaccination (60+)

# Topic Areas:

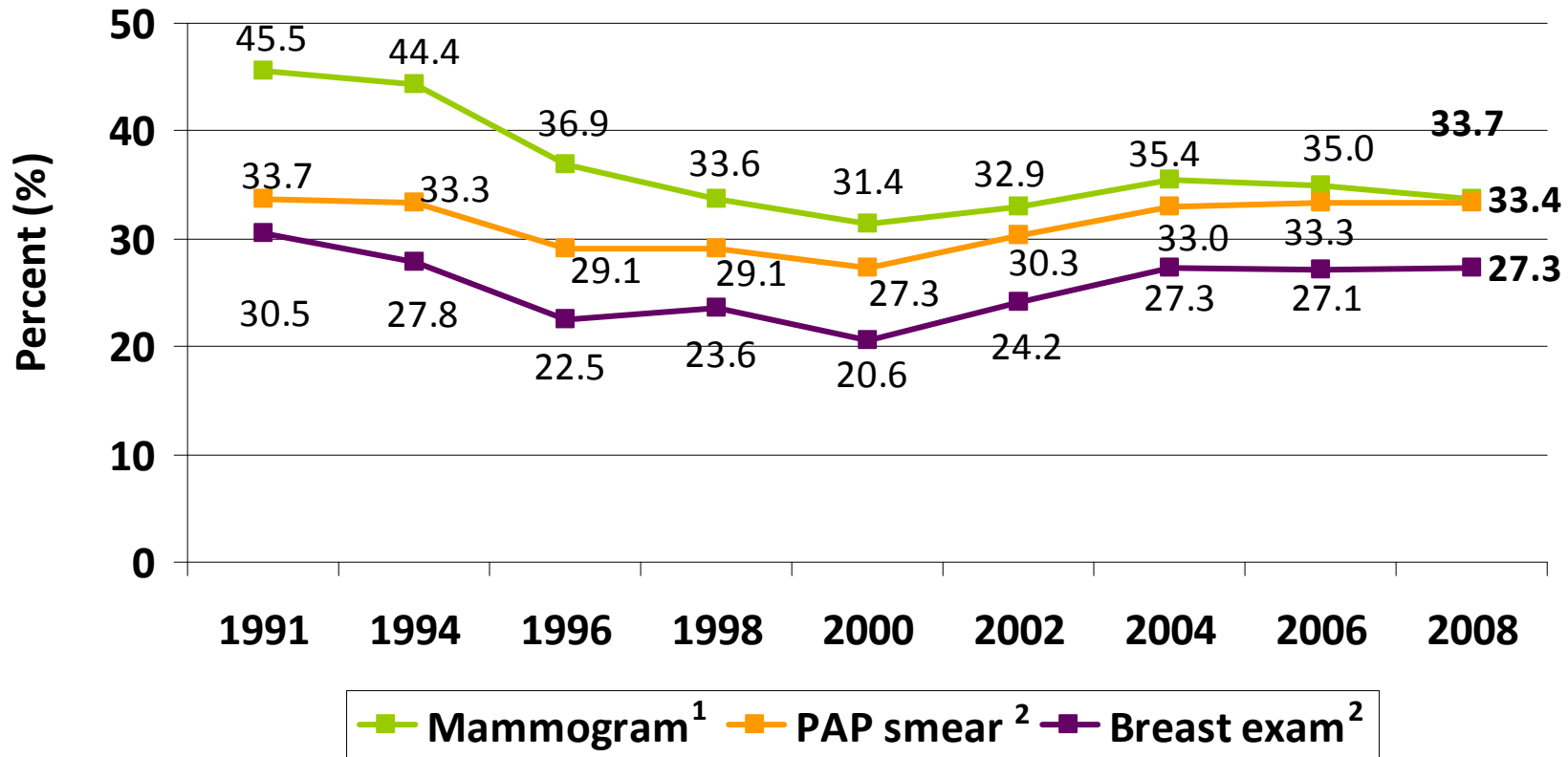
## Disease Prevention & Access to Care

### ACCESS TO CARE

#### Source and Utilization

- ✓ Regular source of care
- ✓ Setting of regular care
- ✓ Length of time since most recent medical visit
- ✓ Number of overnight stays in the hospital, past year
- ✓ Transportation barrier to healthcare
- ✓ Language barrier to healthcare
- ✓ Failure to seek healthcare, fill a prescription, due to cost

### Figure 3. Women (18+) Who Did Not Receive Selected Screenings in the Past Year, Southeastern Pennsylvania, 1991-2008.



<sup>1</sup> Asked of female adult respondents 40 years of age and older.

<sup>2</sup> Asked of female adult respondents 18 years of age and older.

# Topic Areas:

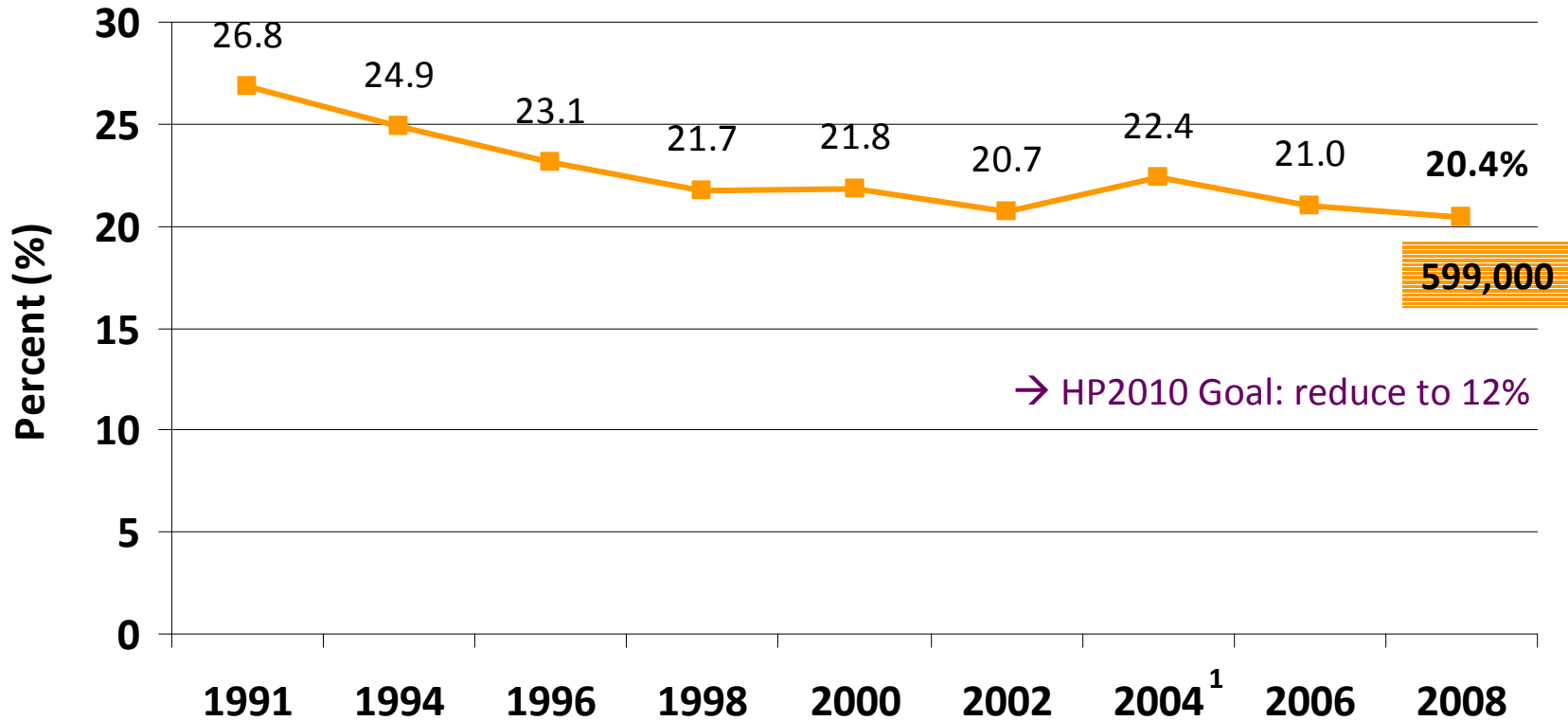
## Personal Health Behaviors

- ✓ Smoking status, frequency
- ✓ Smoking quit method and duration of cessation
- ✓ Advised by a doctor to quit smoking
- ✓ Exposure to cigarette smoke in household, car
- ✓ Use of other tobacco products
- ✓ Advised by doctor to lose weight
- ✓ Number of servings of fruits & vegetables
- ✓ Fast food consumption
- ✓ Exercise frequency
- ✓ Sleep – duration and quality

**The 2004 and 2008 surveys include questions focusing on food access and nutrition**



### Figure 4. Cigarette Smoking among Adults (18+), Southeastern Pennsylvania, 1991-2008.



1. In the 2004 and later surveys, the wording of the smoking question was changed slightly. Instead of asking respondents if they currently smoke, as was asked in previous survey years, respondents were asked if they smoke every day, some days or not at all.

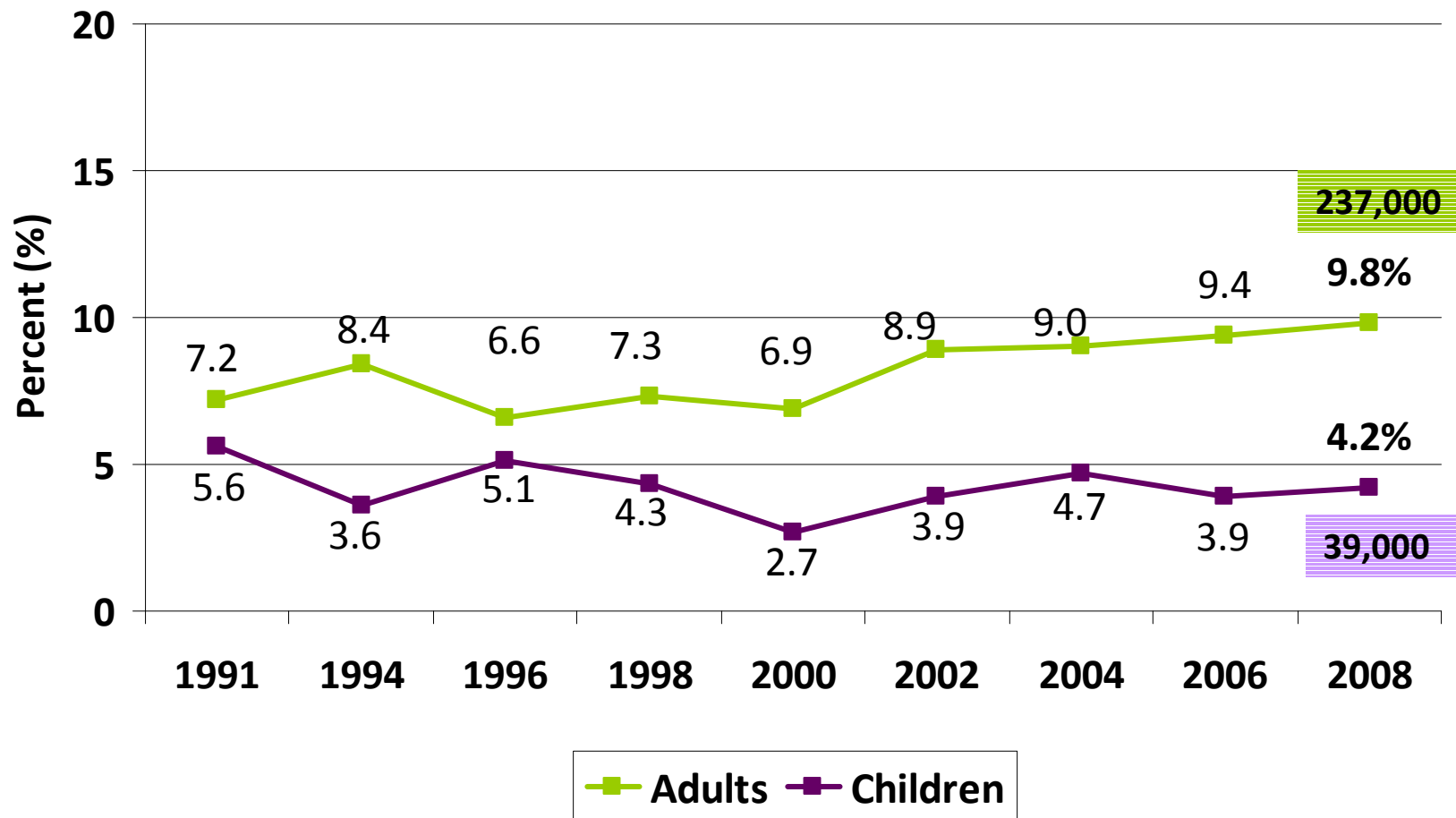
# Topic Areas: Health Insurance

**PHMC's Household Health Survey has many questions pertaining to health insurance coverage with a special focus on at-risk populations.**

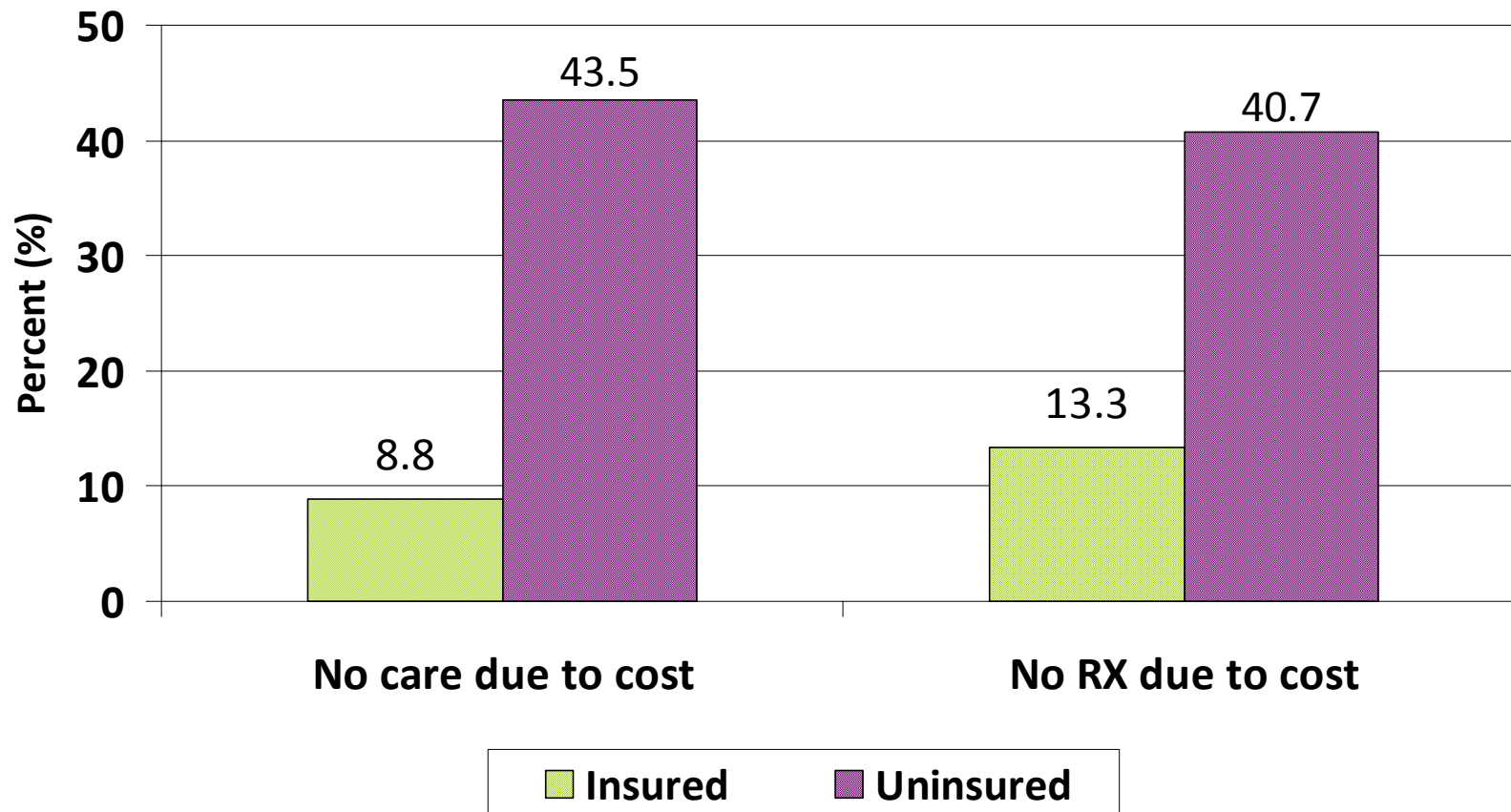
- ✓ Current source(s) of health coverage, name of insurer
- ✓ Respondents without health insurance during past year: length of time; ability to get care
- ✓ What is the primary reason for lack of coverage
- ✓ Coverage for prescription drugs; dental care
- ✓ Medicare Part D
- ✓ Visited E.R. due to lack of health insurance



**Figure 5. Uninsured Adults (18-64) and Children (0-17), Southeastern Pennsylvania, 1991-2008.**



**Figure 6. Cost Barriers to Health Care among Adults (18+) by Insurance Status, Southeastern Pennsylvania, 2008.**



# Topic Areas:

## Mental Health & Environment

### MENTAL HEALTH

- ✓ Diagnosed mental health condition
- ✓ Receiving treatment for mental health condition
- ✓ Older adult depression scale
- ✓ Level of stress in the past year
- ✓ Use of professional mental health services

### SAFETY & VIOLENCE

- ✓ Firearms in the home
- ✓ Firearms kept in a locked place/trigger lock
- ✓ Personal safety (feeling of safety in community)

# Topic Areas:

## Social Capital and Neighborhood

### SOCIAL CAPITAL

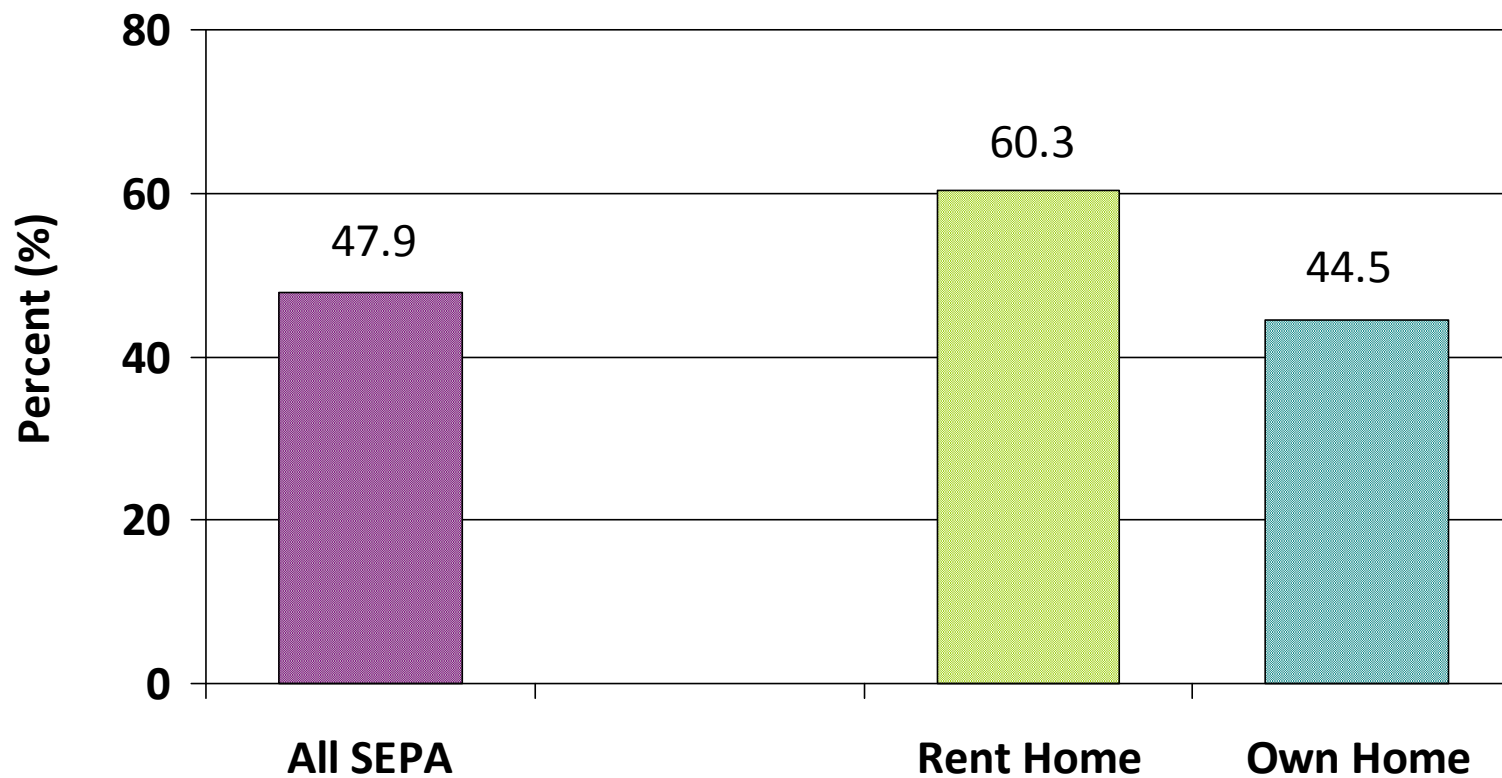
- ✓ Involvement in local groups & organizations
- ✓ Willingness of community to help neighbors
- ✓ Neighbors have worked together
- ✓ Community improvement
- ✓ Sense of belonging to the community
- ✓ Feelings of trust in the community



### HOUSING & NEIGHBORHOOD

- ✓ Access to fresh produce
- ✓ Use of neighborhood recreational facilities
- ✓ Reasons for physical inactivity
- ✓ Affordable housing
- ✓ Rent or own home

### Figure 8. Percent Adults (18+) Who Report Difficulty Paying Monthly Housing Costs, SEPA, 2008



# Topic Areas:

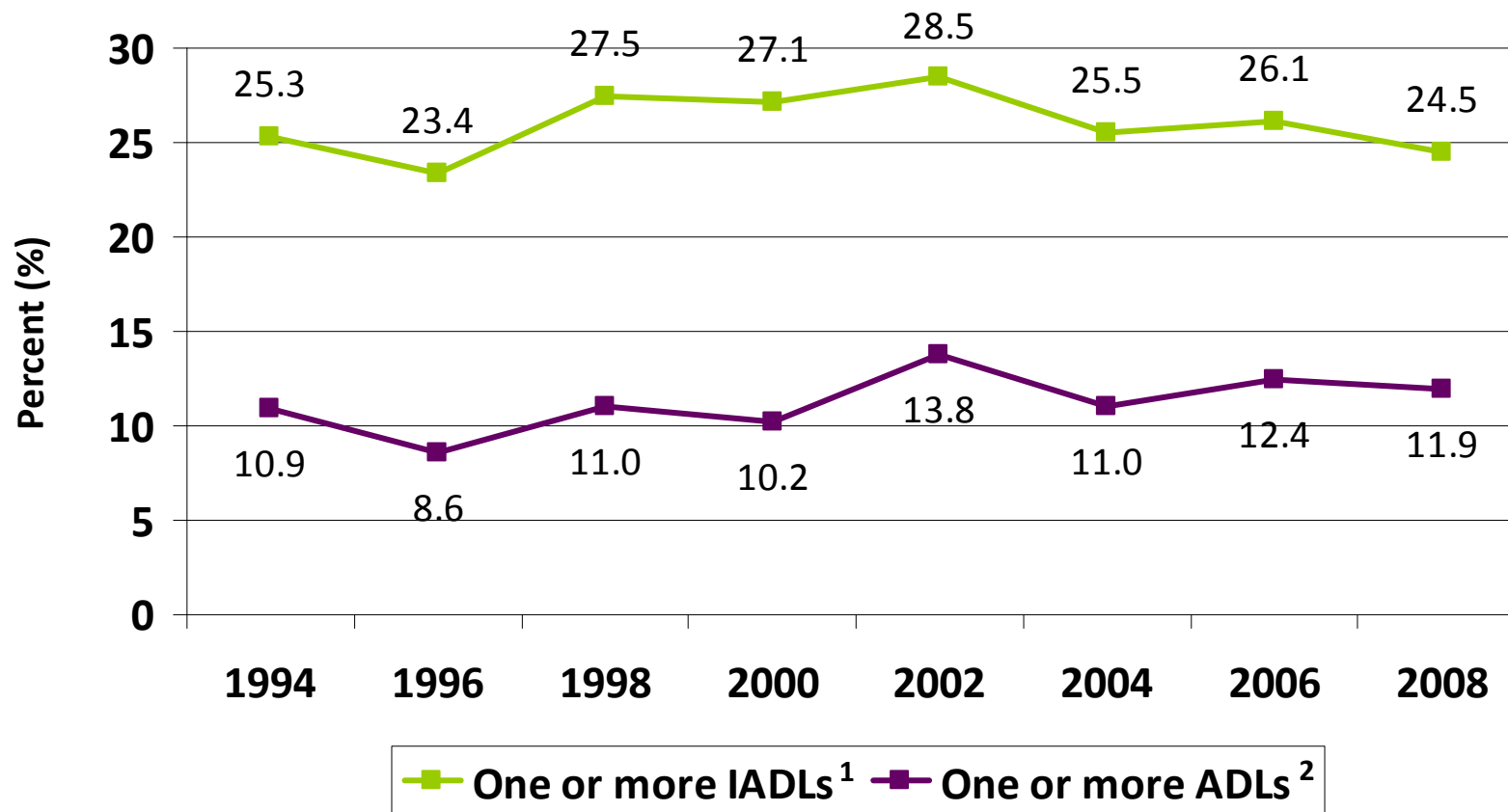
## Older Adult Supplement (Ages 60+)

Older adults are extensive users of health care. The survey includes a series of questions about older adults, their health, happiness, and ability to live independently.

- ✓ **Housing and environment**
- ✓ **Use of aids** and prosthetic devices
- ✓ Home health services and caregiving
- ✓ Use of formal in-home care and payment
- ✓ **IADL Impairments** (i.e. using phone, shopping walking, meal prep, cleaning, handling money, etc.)
- ✓ **ADL Impairments** (i.e. bathing, grooming, eating, etc.)
- ✓ **Use of informal help** with IADL and ADL
- ✓ **Social supports & services:** contact with friends and relatives, familiarity, use, and need for activities at senior center, food programs, transportation, PACE/prescription drug assistance, senior helpline



## Figure 7. Functional Status of Older Adults (65+), Southeastern Pennsylvania, 1994-2008.



<sup>1</sup> Shopping for groceries, preparing meals, and doing housework are Instrumental Activities of Daily Living (IADL).

<sup>2</sup> Bathing, walking, grooming and dressing are Activities of Daily Living (ADL).

## Additional Topic Areas: Children & Youth (Ages 0-17)

**Many of the core health questions are also asked of the selected child respondent. In addition, questions include...**

- ✓ Child care: use of formal or informal child care services, problems with child care, etc.
- ✓ Participation in organized after-school activities
- ✓ Employment & school attendance (ages 13-24)

# Additional Topic Areas: Socio-demographics

- ✓ Age
- ✓ Gender
- ✓ Employment status
- ✓ Education
- ✓ Race
- ✓ Ethnicity: Hispanic or Latino descent

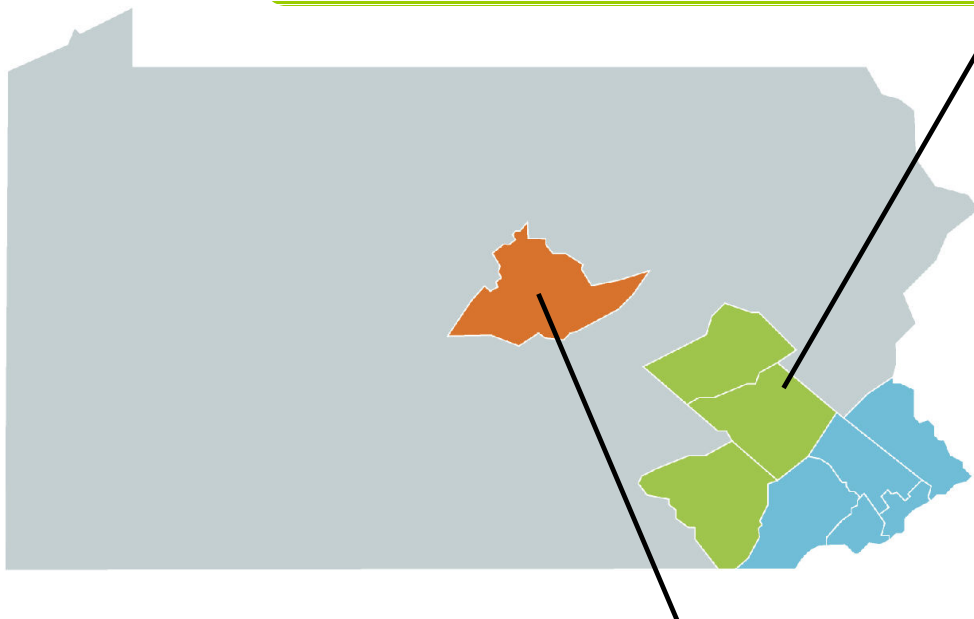
- ✓ Income
- ✓ Marital status
- ✓ Sexual Identity
- ✓ Welfare (TANF, SSI, SSDI, GA,WIC)
- ✓ Religious affiliation & attendance
- ✓ Country of birth
- ✓ Speak language other than English in home/language
- ✓ Experiences of racial/ethnic discrimination
- ✓ Geographic location



# Survey Expansion

## **Berks-Lancaster-Schuylkill Household Health Survey – 2008**

*1,000 interviews conducted per county (3,000 total)*



## **Centre County Household Health Survey – 2009**

*1,250 interviews conducted including 250 cell phone interviews*

## II. Demographics: 2000 U.S. Census

The Community Health Data Base provides access to past and present data from the U.S. Census Bureau. Data can be aggregated on the same geographic levels as the Household Health Survey, including ZIP Code and neighborhood.

The Data Base uses a third-party data source (Claritas, Inc.) to create estimates and projections based on the decennial Census. The most current include:

- Population counts for 2000
- Estimates for 2006, 2008
- Projections for 2011, 2013

## II. Demographics: 2000 U.S. Census (Cont.)

- Population Totals
- Age Distribution
- Racial/Ethnic Distribution
- Gender Distribution
- Household Income
- Average Household Size
- Linguistically Isolated
- Citizenship
- Housing Units
- Elderly Living Alone
- Year House Built
- Length of Time at Residence
- Median Housing Value
- Educational Status
- Employment/Occupation
- Poverty Status
- Female-Headed Households
- Mobility and Self-Care

## III. Vital Statistics

The most recent data, provided in four year average annualized rates, are from 2003-2006. They are available at the ZIP code and county level for all of Southeastern Pennsylvania and by Census tract for Philadelphia County.

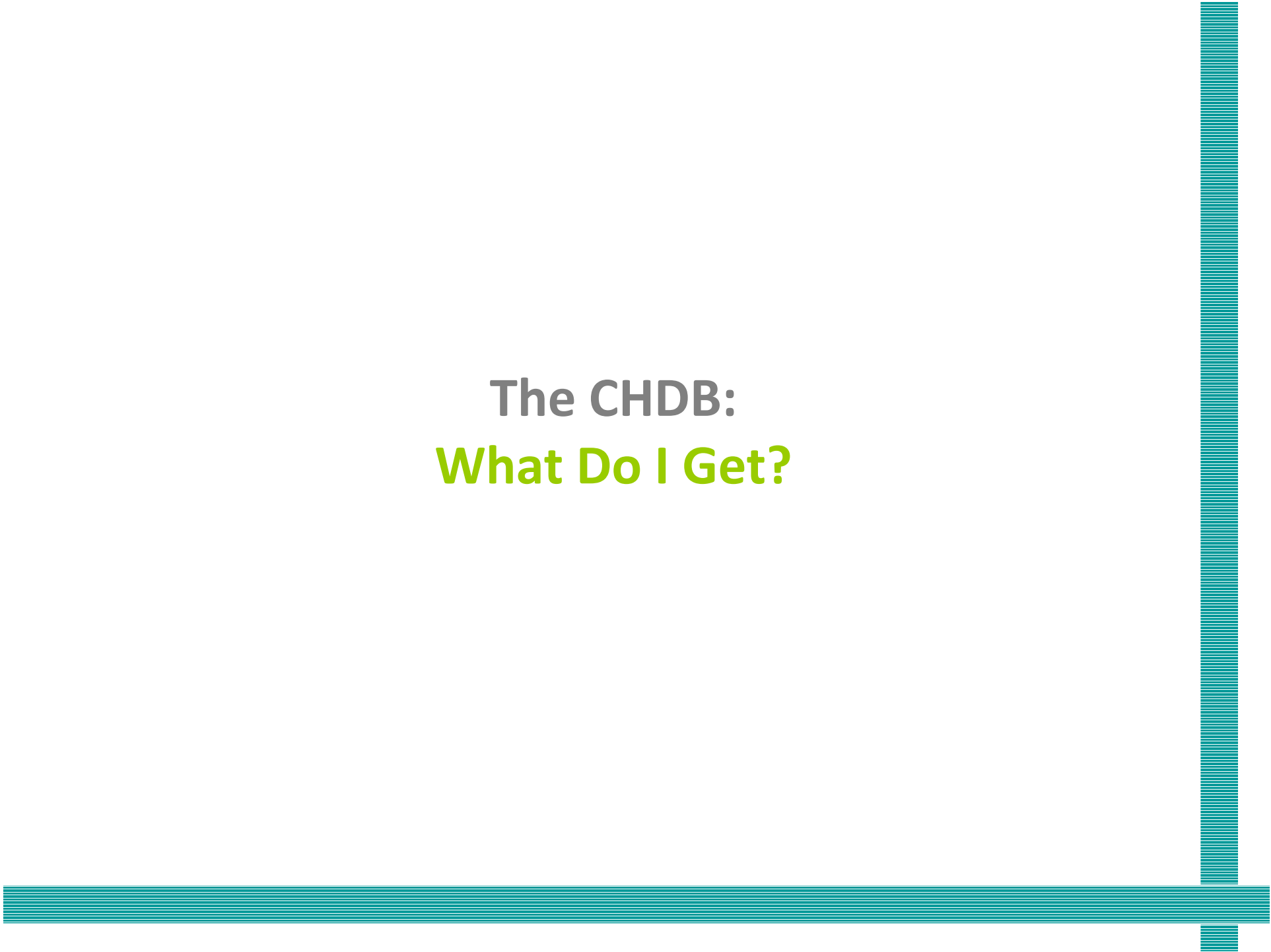
### Birth Data:

- Births to all Women
- Births to Women 15-44
- Births to Adolescent Women
- Low Birthweight Births
- Prenatal Care

### Mortality Data:

- All Causes
- Heart Disease
- All Cancer
- Lung, Breast Cancers
- Neonatal Death
- Infant Mortality
- Stroke
- Pneumonia/Influenza
- Accidents/Drugs

**The CHDB:**  
**What Do I Get?**



# The Community Health Data Base

## *What do I get?*



**Data** – Household Health Survey, Demographics, Vital Statistics

**Direct Assistance** – assigned research associate

**Special Events** – skill building seminars, orientations, data development

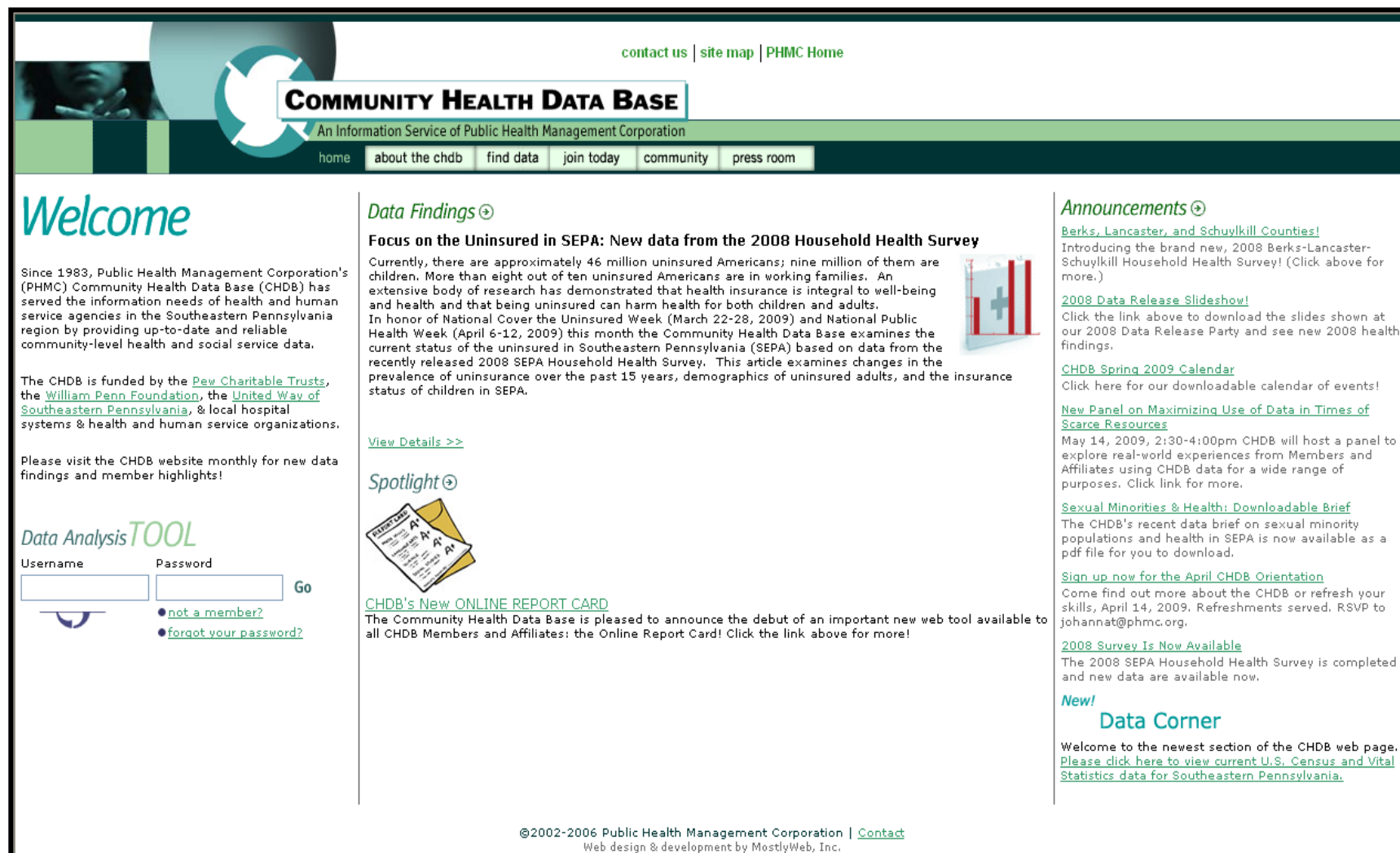
**Reports and Publications** – hard copy, online, e-mail

**Website** – [www.CHDBdata.org](http://www.CHDBdata.org)

Including dynamic online tools for quick access to customized data runs...



# CHDB Website: Updated Monthly



The screenshot shows the CHDB website homepage with a navigation menu, a 'Welcome' section, a 'Data Analysis TOOL' login form, and several news items under 'Data Findings' and 'Announcements'. The website has a green and white color scheme with a circular logo on the left.

contact us | site map | PHMC Home

## COMMUNITY HEALTH DATA BASE

An Information Service of Public Health Management Corporation

home about the chdb find data join today community press room

### Welcome

Since 1983, Public Health Management Corporation's (PHMC) Community Health Data Base (CHDB) has served the information needs of health and human service agencies in the Southeastern Pennsylvania region by providing up-to-date and reliable community-level health and social service data.

The CHDB is funded by the [Pew Charitable Trusts](#), the [William Penn Foundation](#), the [United Way of Southeastern Pennsylvania](#), & local hospital systems & health and human service organizations.

Please visit the CHDB website monthly for new data findings and member highlights!

### Data Analysis TOOL

Username  Password

[not a member?](#)  
[forgot your password?](#)

### Data Findings

#### Focus on the Uninsured in SEPA: New data from the 2008 Household Health Survey

Currently, there are approximately 46 million uninsured Americans; nine million of them are children. More than eight out of ten uninsured Americans are in working families. An extensive body of research has demonstrated that health insurance is integral to well-being and health and that being uninsured can harm health for both children and adults. In honor of National Cover the Uninsured Week (March 22-28, 2009) and National Public Health Week (April 6-12, 2009) this month the Community Health Data Base examines the current status of the uninsured in Southeastern Pennsylvania (SEPA) based on data from the recently released 2008 SEPA Household Health Survey. This article examines changes in the prevalence of uninsurance over the past 15 years, demographics of uninsured adults, and the insurance status of children in SEPA.

[View Details >>](#)

### Spotlight

#### CHDB's New ONLINE REPORT CARD

The Community Health Data Base is pleased to announce the debut of an important new web tool available to all CHDB Members and Affiliates: the Online Report Card! Click the link above for more!

### Announcements

#### Berks, Lancaster, and Schuylkill Counties!

Introducing the brand new, 2008 Berks-Lancaster-Schuylkill Household Health Survey! (Click above for more.)

#### 2008 Data Release Slideshow!

Click the link above to download the slides shown at our 2008 Data Release Party and see new 2008 health findings.

#### CHDB Spring 2009 Calendar

Click here for our downloadable calendar of events!

#### New Panel on Maximizing Use of Data in Times of Scarce Resources

May 14, 2009, 2:30-4:00pm CHDB will host a panel to explore real-world experiences from Members and Affiliates using CHDB data for a wide range of purposes. Click link for more.

#### Sexual Minorities & Health: Downloadable Brief

The CHDB's recent data brief on sexual minority populations and health in SEPA is now available as a pdf file for you to download.

#### Sign up now for the April CHDB Orientation

Come find out more about the CHDB or refresh your skills, April 14, 2009. Refreshments served. RSVP to [johannat@phmc.org](mailto:johannat@phmc.org).

#### 2008 Survey Is Now Available

The 2008 SEPA Household Health Survey is completed and new data are available now.


### New!

## Data Corner

Welcome to the newest section of the CHDB web page. [Please click here to view current U.S. Census and Vital Statistics data for Southeastern Pennsylvania.](#)

©2002-2006 Public Health Management Corporation | [Contact](#)  
Web design & development by MostlyWeb, Inc.

To receive the Community Health Data Base's monthly e-mail newsletter, including the latest facts and findings from the Southeastern Pennsylvania Household Health Survey, please email: [johannat@phmc.org](mailto:johannat@phmc.org)



**For more information about the  
Community Health Data Base, please  
contact us at 215-985-2548 or visit  
[www.CHDBdata.org](http://www.CHDBdata.org)**