

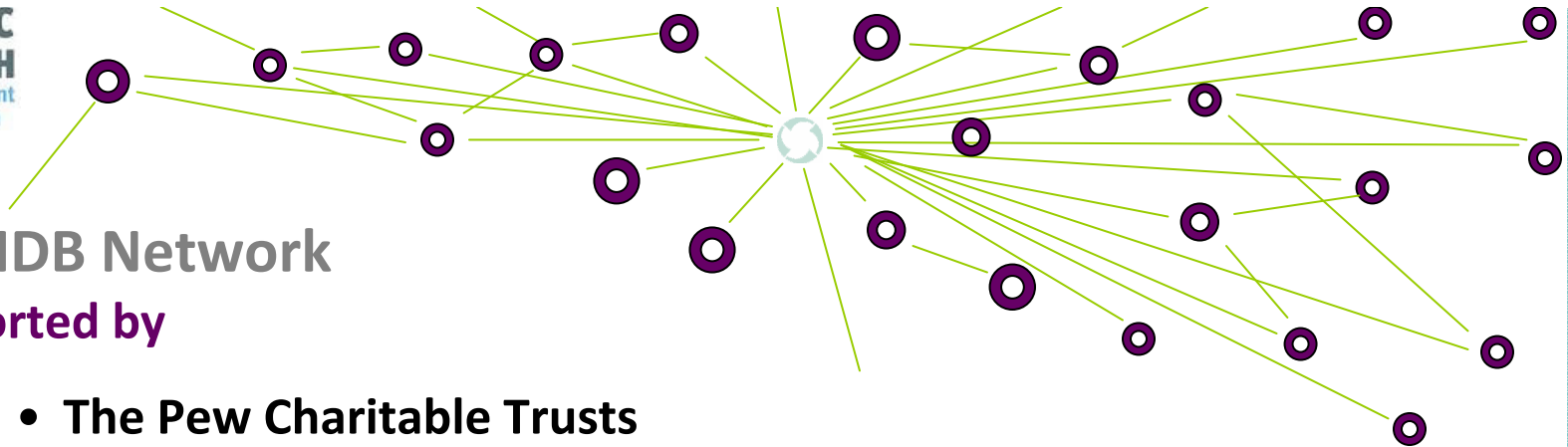
# **CHDB's**

## **2010 Southeastern Pennsylvania Household Health Survey:**

*Looking back on a decade of data*

**Presentation for North Penn  
April 7, 2011**



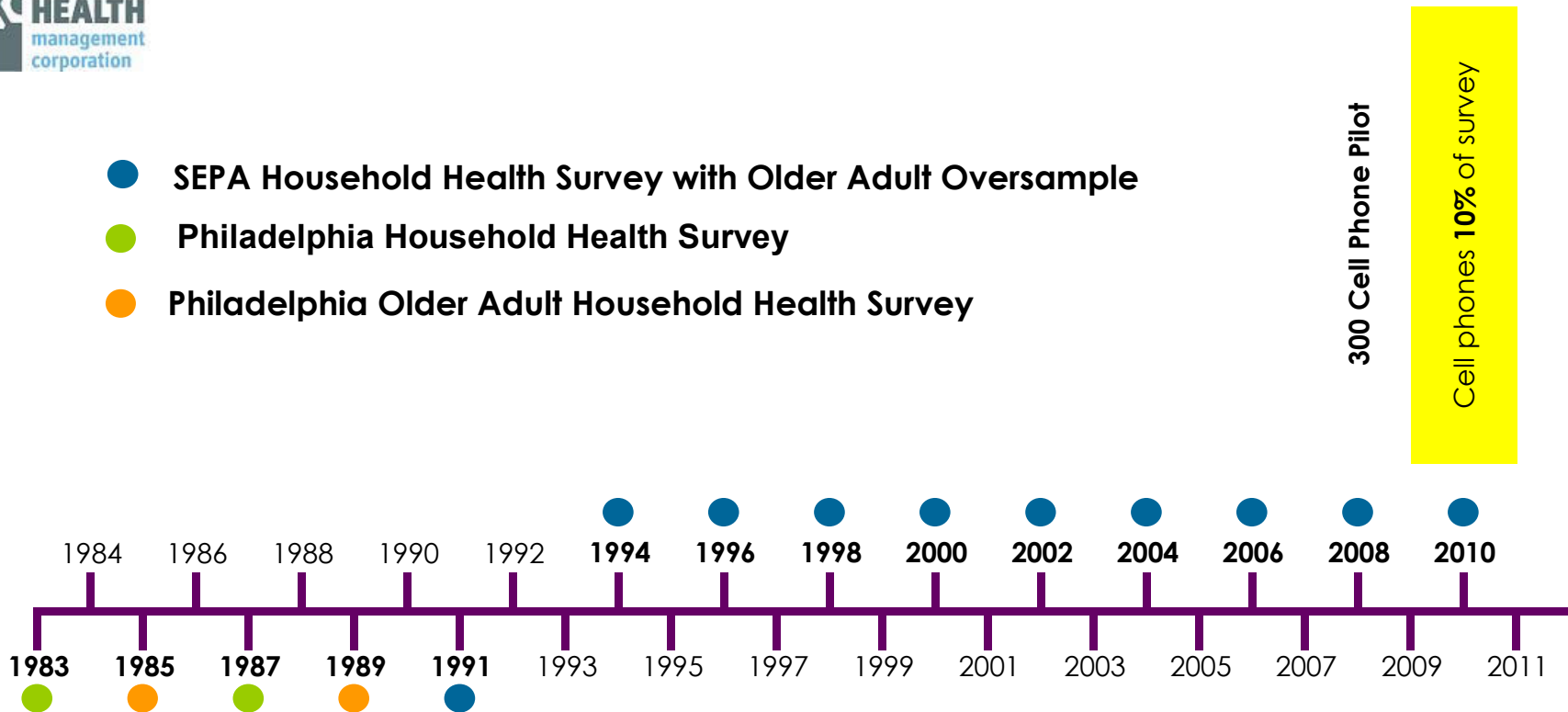


## The CHDB Network Is supported by

- The Pew Charitable Trusts
- William Penn Foundation
- United Way of Southeastern Pennsylvania
- The Green Tree Community Health Foundation
- The Cigna Foundation
- The Philadelphia Foundation
- The United Way of North Penn
- The North Penn Community Health Foundation
- Thomas Scattergood Foundation

**And nearly 400 Member and Affiliate organizations across  
Southeastern Pennsylvania**

- SEPA Household Health Survey with Older Adult Oversample
- Philadelphia Household Health Survey
- Philadelphia Older Adult Household Health Survey



## The 2010 Survey:

- 12<sup>th</sup> Survey in over 10,000 HHs in SEPA
- Oversamples of adults 60+ and 75+

HP 2010 Goals Set

Healthy People 2010

HP 2010 Goals Measured

HP 2020 Goals Set

# New Samples and Surveys

## **NEW! 2010 Cell Phone Sample**

1,000 SEPA interviews conducted by cell phone as part of the SEPA Household Health Survey

## **NEW! Topics**

### **NEW! Berks-Lancaster-Schuylkill (BLS) Household Health Survey**

First fielded summer of 2008; 3,000 households surveyed across the three counties.

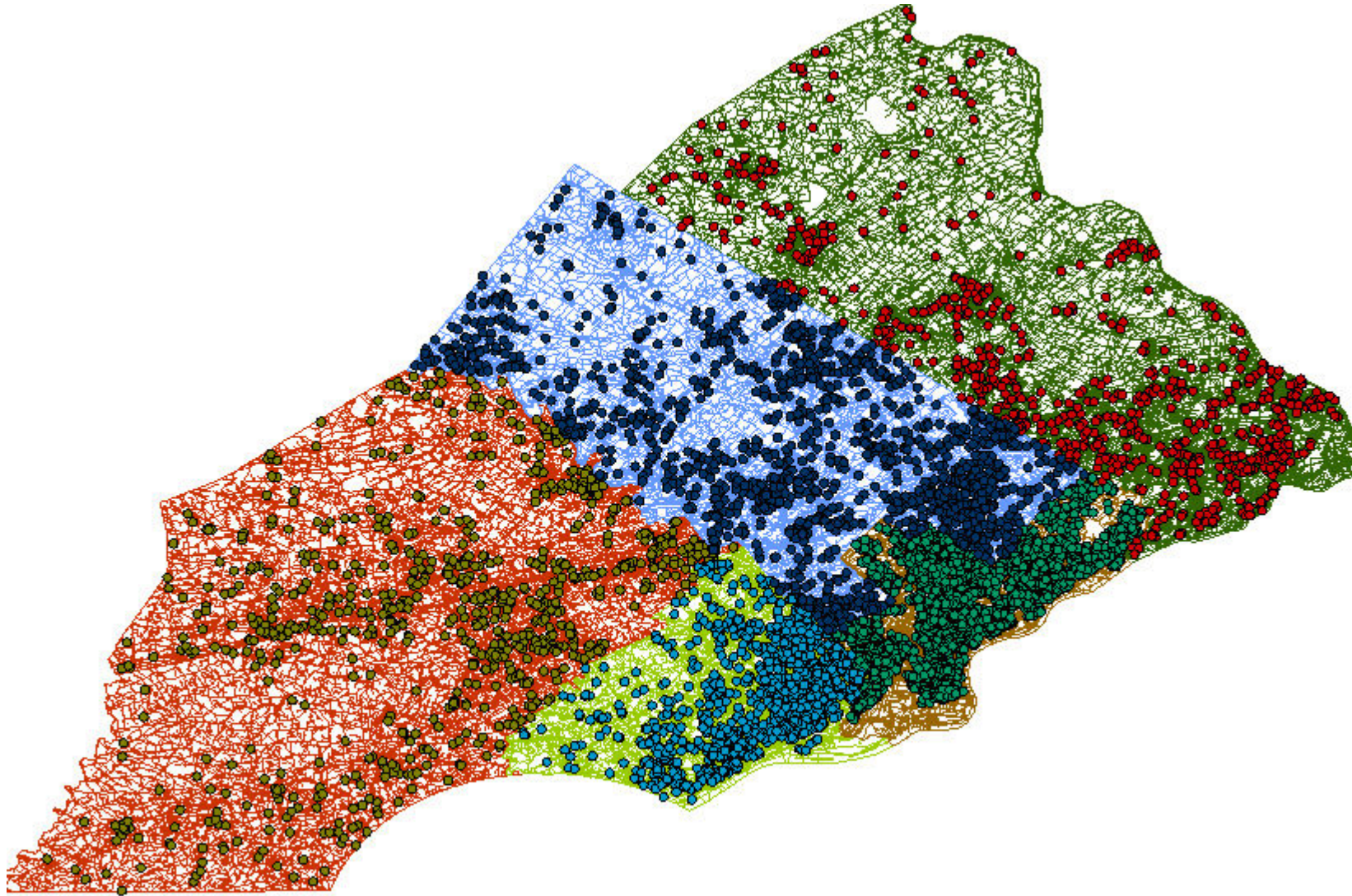
Second B-L-S survey is in the field now!

### **NEW! NJ Children's Health Survey**

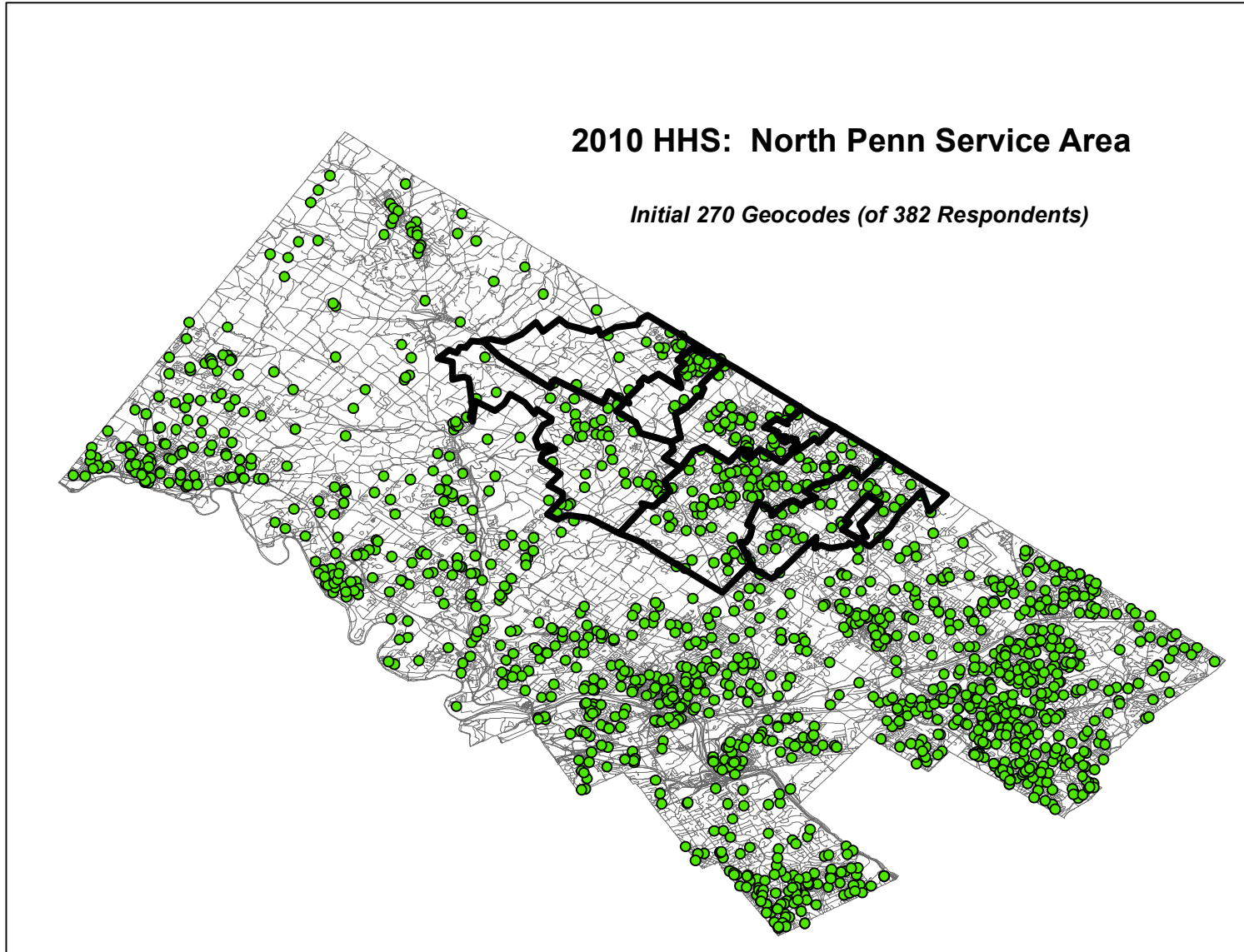
Survey of 1,000 households with children (0-17 yrs) in Mercer County, NJ.

Will be fielded later this Spring (May 2011)!

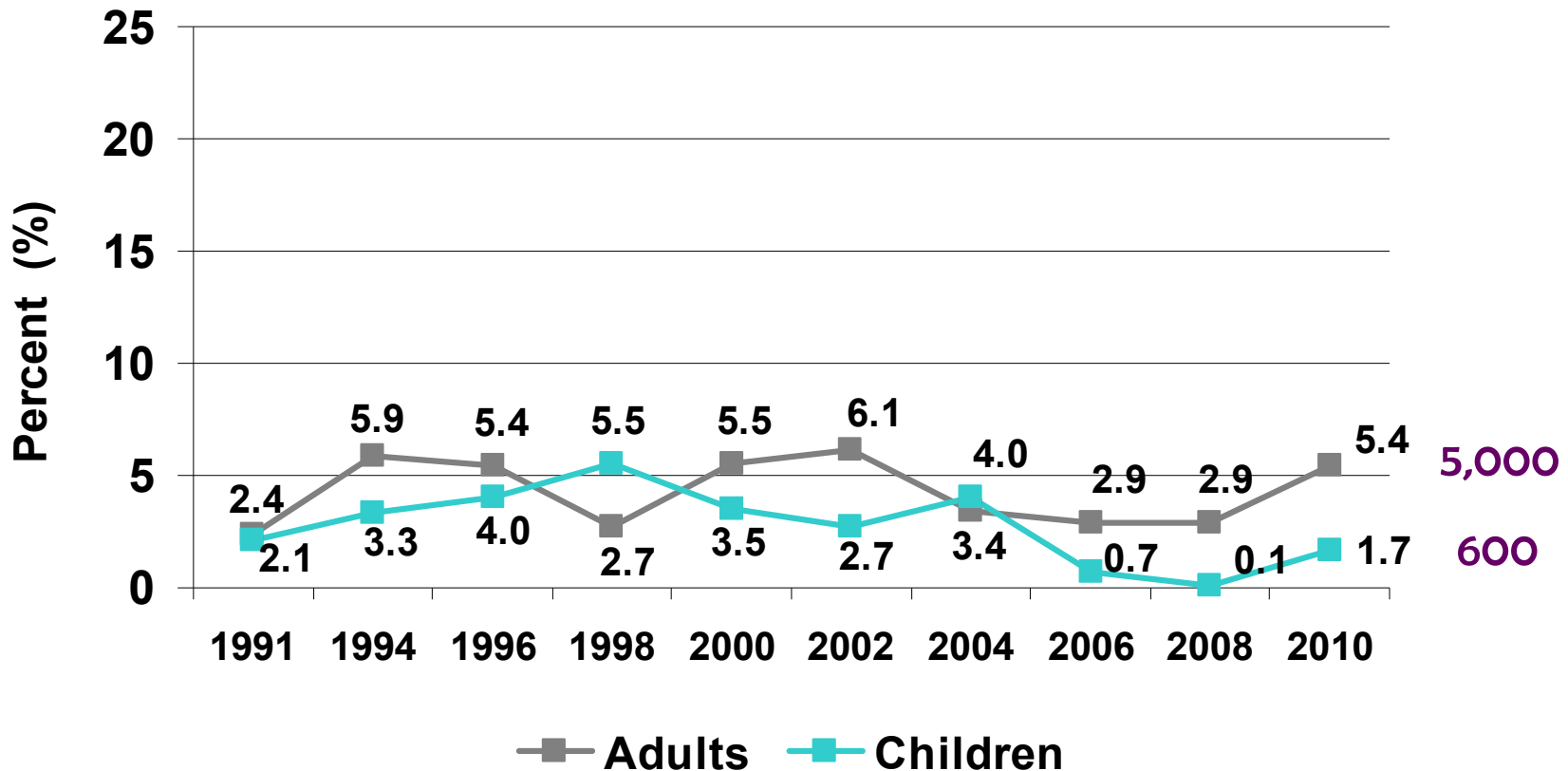
# Who Was Interviewed?



# Interviews in the North Penn Service Area



## Uninsured Adults (18-64) and Children (0-17), North Penn Service Area, 1991-2010

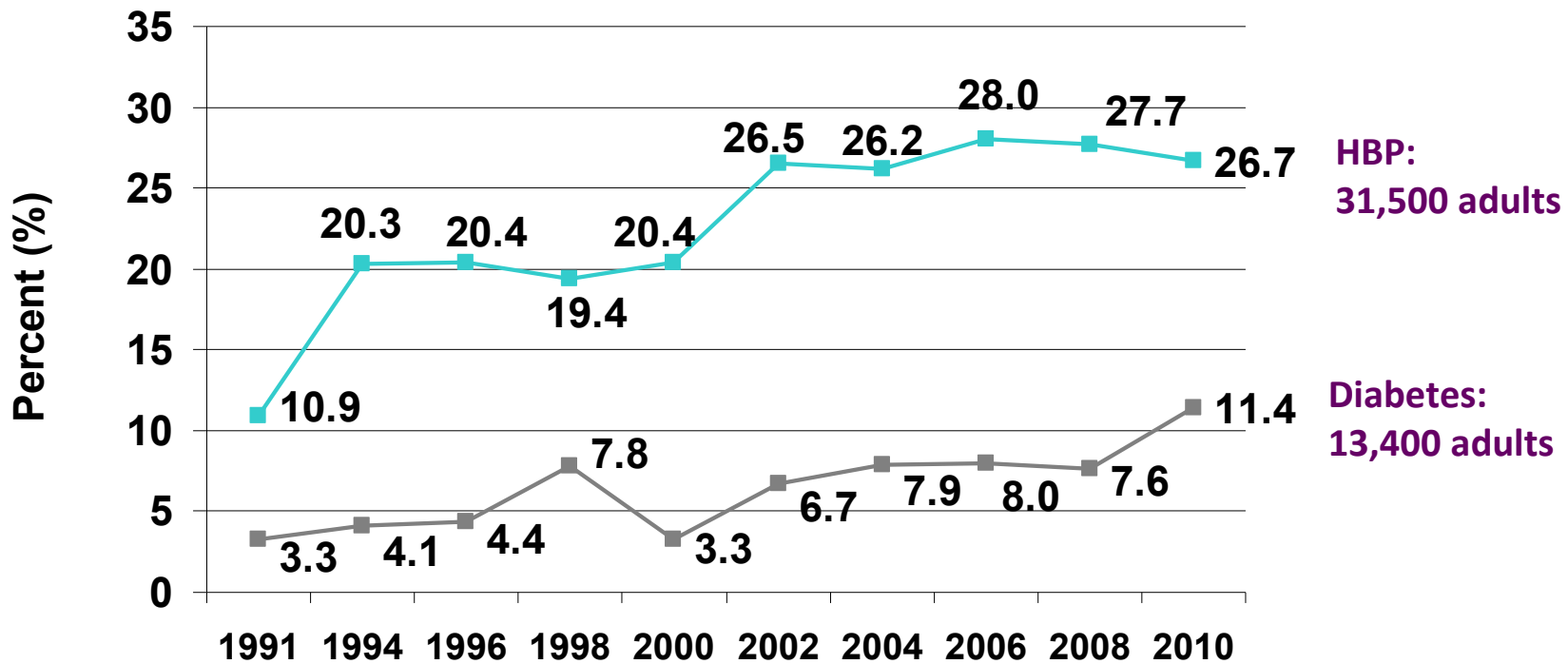


In 2010, 11% of adults in SEPA have no public or private health insurance; this represents about 276,400 individuals.

Approximately 31,900 children in SEPA are uninsured (3.4%).

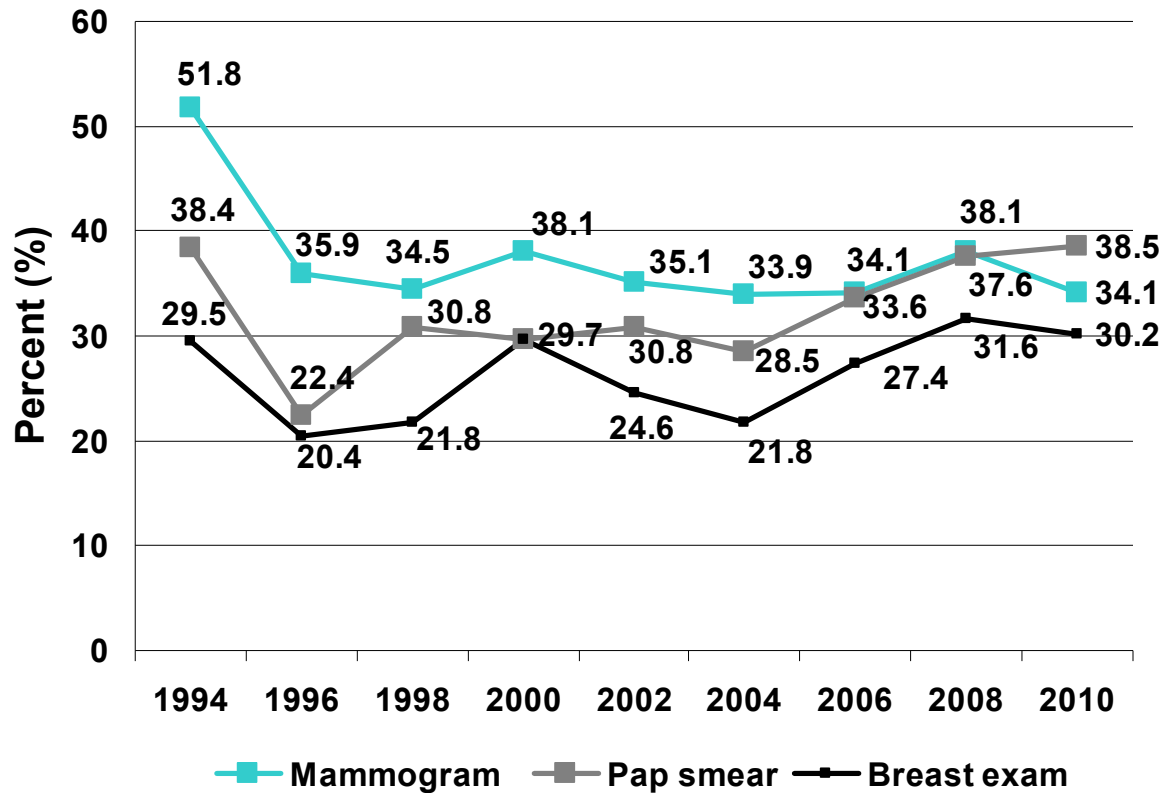
# Chronic Health Conditions Among Adults (18+), North Penn Service Area, 1991-2010

Similar to the nation, key indicators of health status in our region's residents have not improved that much despite advances in medical care.



<sup>1</sup> NOTE: Beginning in the 2004 survey, the wording of the question about high blood pressure and diabetes was changed slightly. Respondents were asked if they EVER had high blood pressure or diabetes. In past survey years, respondents were asked if they currently have high blood pressure or diabetes.

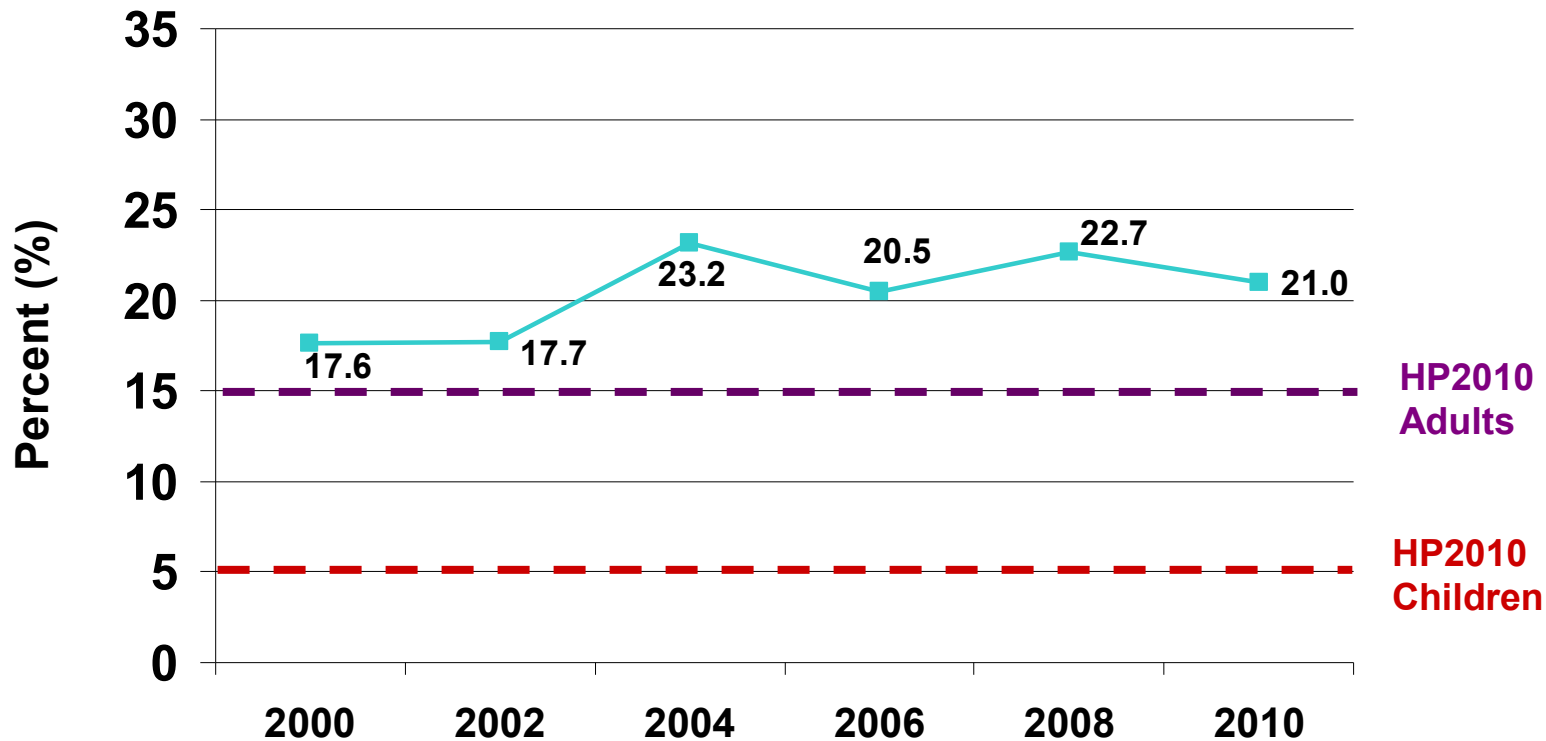
## Women (18+) Who **Did Not** Receive Selected Cancer Screenings in the Past Year, North Penn Service Area, 1994-2010



- Cancer is the second leading cause of death in the United States.
- Early detection greatly increases the survival rate and enables many women to have less invasive treatments.
- Many women are still not receiving the recommended cancer screenings.

Notes: <sup>1</sup> Mammogram asked of female adult respondents 40 years of age and older.  
<sup>2</sup> Pap smear and breast exam asked of female adult respondents 18 years of age and older.

## BMI-based Obesity Among Adults (18+), North Penn Service Area, 2000-2010

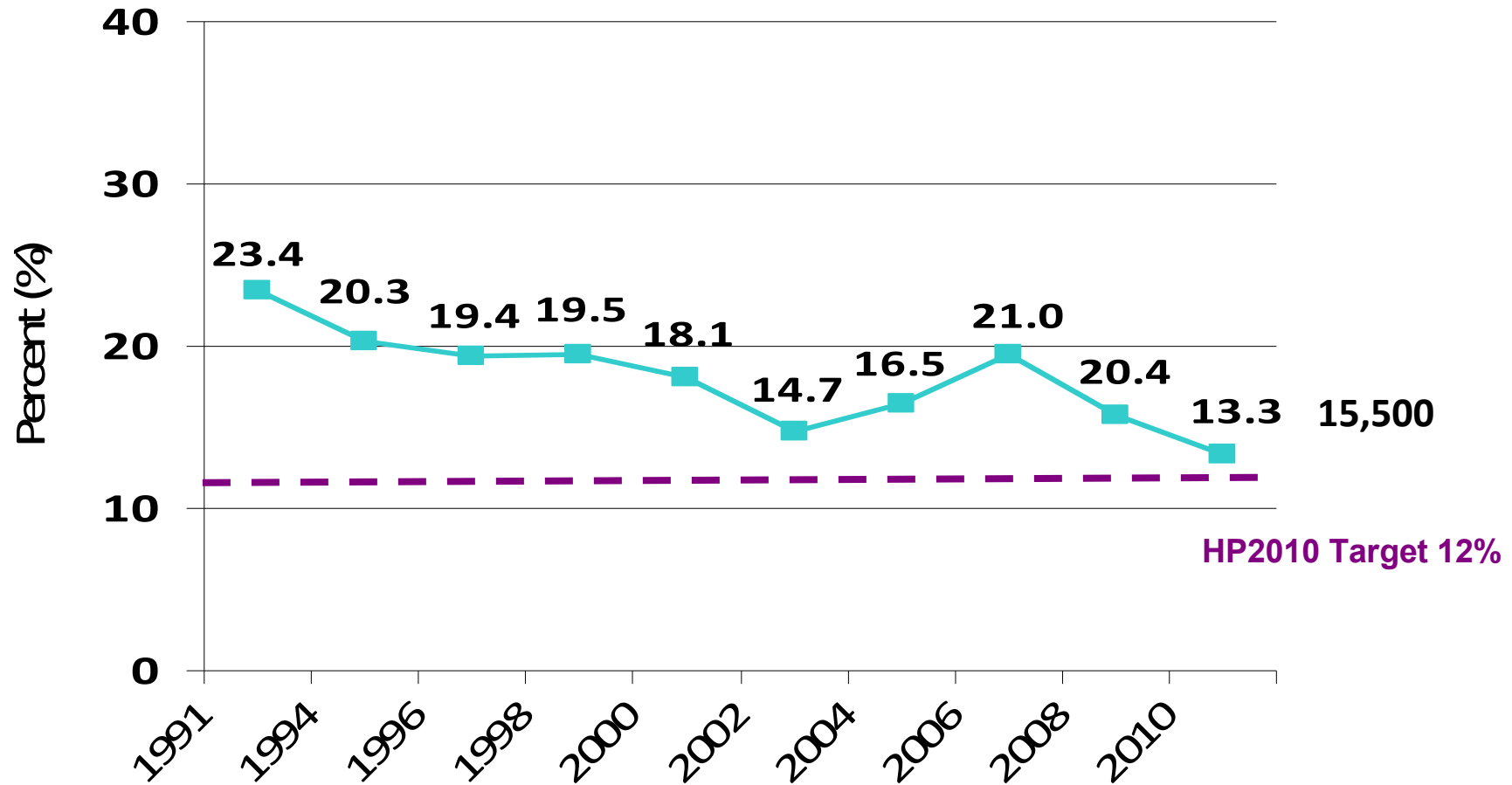


Notes: <sup>1</sup> Adult obesity is defined as a score of 30 or greater on the Body Mass Index (BMI).

<sup>2</sup> Children who score in the 95<sup>th</sup> percentile or higher for their age on the Body Mass Index (BMI) are considered obese.

In 2002, 20.3% of children (6-17) in the North Penn service area were obese. In 2010, 13.2% of children in this area are obese. This number is substantially greater than the HP2010 goal of 5% for children.

# Cigarette Smoking Among Adults (18+), North Penn Service Area, 1991-2010



NOTE: Beginning with the 2004 survey, the wording of the smoking question was changed slightly. Instead of asking respondents if they currently smoke, as was asked in previous survey years, respondents were asked if they smoke every day, some days or not at all.

# New questions for 2010

Pet Ownership among Older Adults

Menu Labeling

Disability Status

Addiction and Recovery Experiences

Commuting

HIV status

Problem Gambling Behavior

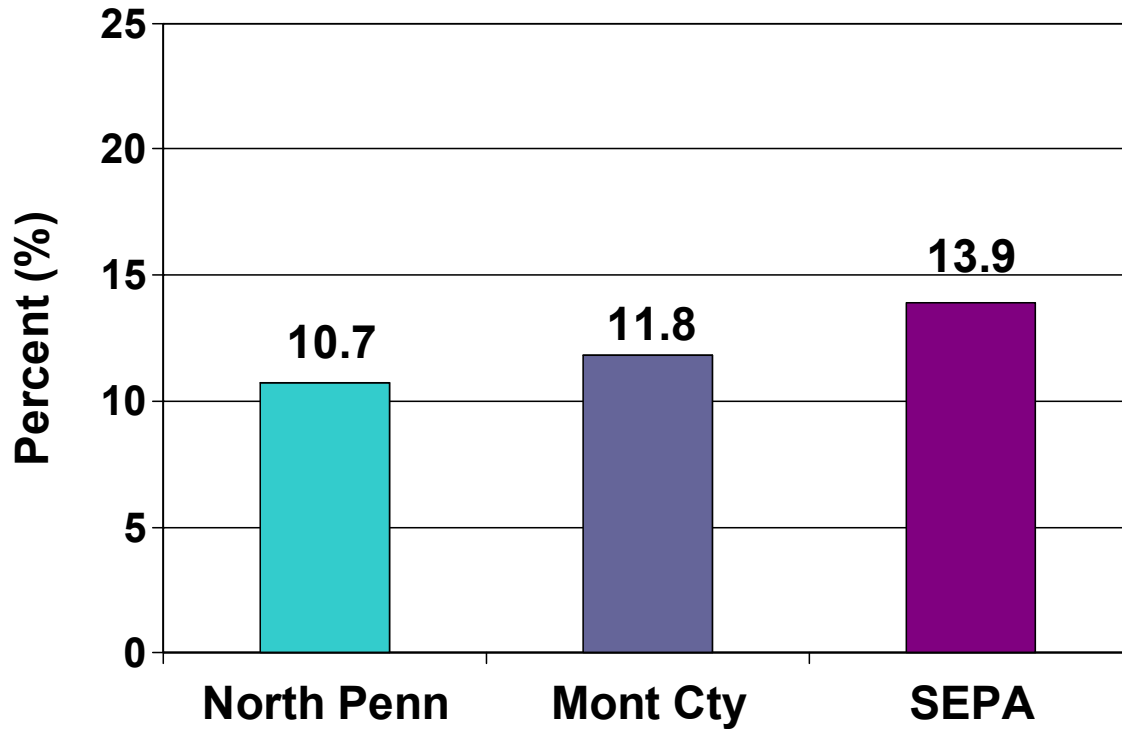
Attitudes about Addiction

Cigarette Purchases

Sugary Beverage Consumption

Internet Access and Use

Disability Status



10.7% of adults 18+ in the North Penn area have a physical, mental or emotional disability compared to 13.9% of adults in SEPA.

Pet Ownership among Older Adults

Menu Labeling

Disability Status

Addiction and Recovery Experiences

Commuting

HIV status

Problem Gambling Behavior

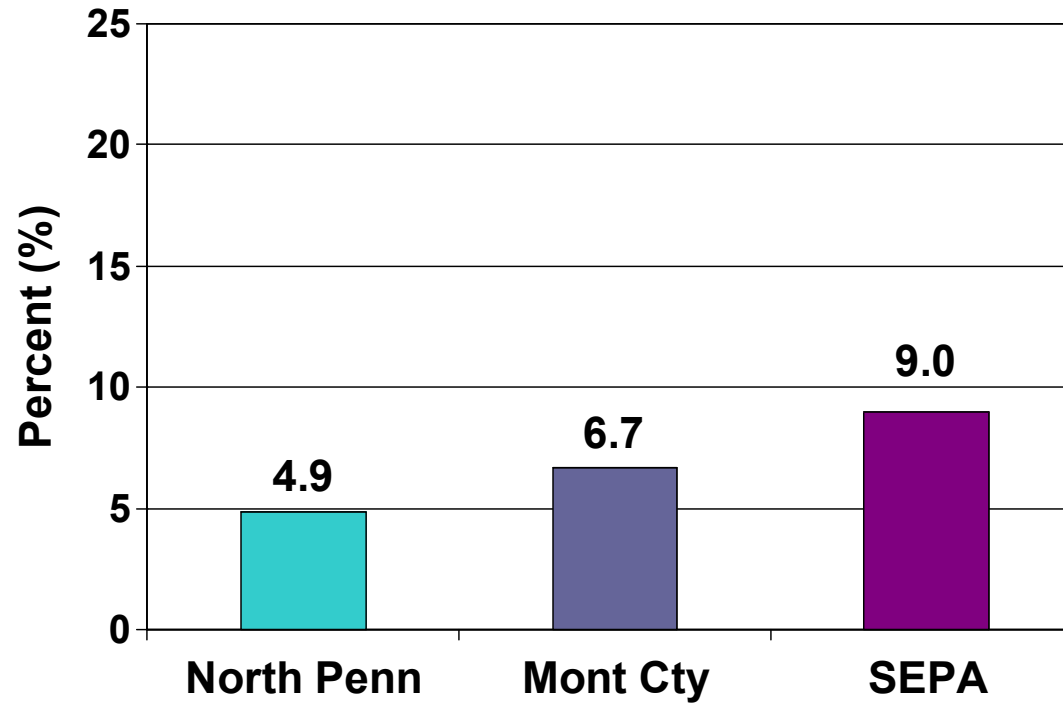
Attitudes about Addiction

Cigarette Purchases

Sugary Beverage Consumption

Internet Access and Use

## Addiction and Recovery Experiences



4.9% of adults 18+ in the North Penn area ever had an alcohol or drug problem compared to nearly one in ten SEPA adults (9.0%).

Pet Ownership among Older Adults

Menu Labeling

Disability Status

Addiction and Recovery Experiences

Commuting

HIV status

Problem Gambling Behavior

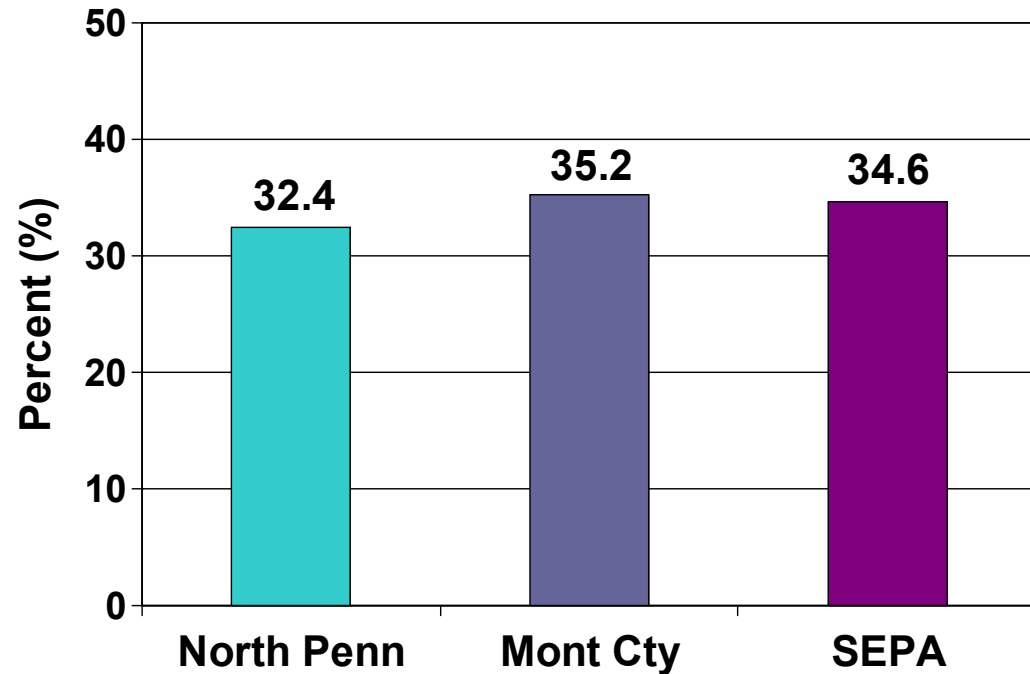
Attitudes about Addiction

Cigarette Purchases

Sugary Beverage Consumption

Internet Access and Use

## Problem Gambling Behavior



About a third (34.6%) of SEPA adults and 32.4% of North Penn area adults participate in gambling.

Pet Ownership among Older Adults

Menu Labeling

Disability Status

Addiction and Recovery Experiences

Commuting

HIV status

Problem Gambling Behavior

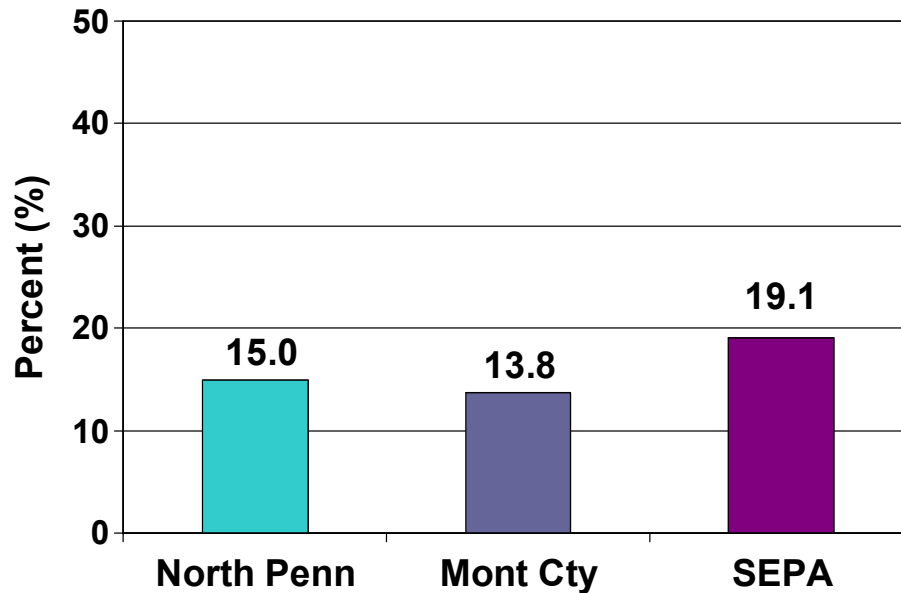
Attitudes about Addiction

Cigarette Purchases

Sugary Beverage Consumption

Internet Access and Use

## Internet Access and Use



15% of North Penn area adults never use the internet; this percentage represents about 17,500 adults.

Almost one in five SEPA adults never use the internet, representing approximately 563,000 adults.

# You can find our tools:

On our homepage @ [www.CHDBdata.org](http://www.CHDBdata.org)



**Welcome**

Since 1983, Public Health Management Corporation's (PHMC) Community Health Data Base (CHDB) has served the information needs of health and human service agencies in the Southeastern Pennsylvania region by providing up-to-date and reliable community-level health and social service data.

The CHDB is funded by the [Pew Charitable Trusts](#), the [William Penn Foundation](#), the [United Way of Southeastern Pennsylvania](#), & local hospital systems & health and human service organizations.

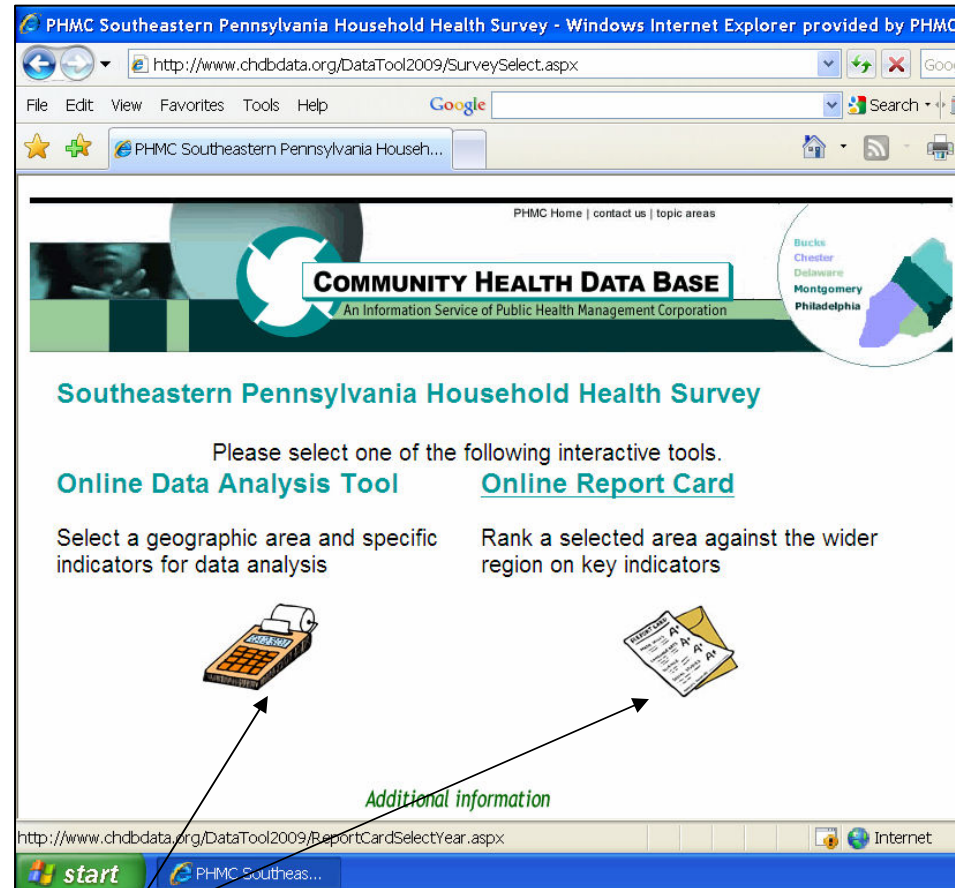
Please visit the CHDB website monthly for new data findings and member highlights!

**Data Analysis TOOL**

Username  Password

[not a member?](#)  
[forgot your password?](#)

Login here!



PHMC Southeastern Pennsylvania Household Health Survey - Windows Internet Explorer provided by PHMC

<http://www.chdbdata.org/DataTool2009/SurveySelect.aspx>

PHMC Home | contact us | topic areas

**COMMUNITY HEALTH DATA BASE**  
An Information Service of Public Health Management Corporation

**Southeastern Pennsylvania Household Health Survey**

Please select one of the following interactive tools.

**Online Data Analysis Tool**      **Online Report Card**

Select a geographic area and specific indicators for data analysis      Rank a selected area against the wider region on key indicators

[Additional information](#)

<http://www.chdbdata.org/DataTool2009/ReportCardSelectYear.aspx>

Our two tools